

Parish Profile of St Catherine of Siena Richmond, Sheffield



THE DIOCESE OF
SHEFFIELD

Contents

Who we are.....	3
An Exciting Opportunity in collaboration with St Matthew's Carver Street.....	4
Bishops' Letter.....	5
A message from Bishop Stephen.....	7
A Message from Canon Grant Naylor SSC.....	7
Who are we seeking?.....	8
The Parish of Richmond.....	9
Map of St Catherine's Parish.....	10
Parish Statistics.....	11
Our Worship.....	12
Community Engagement.....	13
Mission and Opportunities.....	14
Our Building.....	14
The SMMIB funded project.....	16
Vicarage Info.....	17
The Richmond and Handsworth Mission Area.....	18

Who we are

We are a faithful and committed congregation with a missional outlook that we hope a new priest can help us develop further. We are excited about the opportunity that the grant from national church brings in terms of having a larger team for mission and ministry. This is a welcoming parish, and the local Sheffield people are warm towards the church. Alongside support from the diocese of Sheffield, we receive Episcopal oversight from the Bishop of Beverley and are members of the Hickleton Clergy Chapter.



An Exciting Opportunity in collaboration with St Matthew's Carver Street

St Catherine's is seen by the Diocese as a key parish to invest in. Although the Deanery Plan was that St Catherine's and its neighbouring Society Parish of St Mary Handsworth would be served by 1.5 clergy posts, the Diocese has been successful in securing funding from the national church in order to make this a full-time post. The post is guaranteed to the end of 2031 for six years and in order to give it the best chance of succeeding the diocese has also secured funding for additional capacity in order for the new incumbent to build his own employed staff team to support him and the team at St Catherine's. In addition to funding for the incumbent there will be funding for:

- **0.6 Children/ Families Worker**
- **0.5-0.8 Administrator**
- **0.8 Parish Nurse**
- **£80,000 of discretionary spending on the building (to be drawn down in consultation with the diocesan central support team)**

These roles have funding secured to the end of 2028; and we are confident of securing a second tranche of national church funding to the end of 2031. In order to give the new priest the best possible support the appointed candidate will be supported by a graft from St Matthew's, and in this regard he will spend an initial 4 months alongside the parish of St Matthew's Carver Street. St Matthew's has demonstrated significant growth over the past 10 years and has been nominated as a Grafting/ Resourcing Church by the diocese. The incoming incumbent will work with Fr Naylor to recruit up to 8-12 people to transfer from St Matthew's to St Catherine's for a period, in order to boost the growth and capacity of the faithful congregation at Richmond Road. This, if successful, could be a model for similar projects in the future. The appointed candidate would be a pioneer for this type of graft in the Anglo-Catholic Movement and will find a great deal of support from diocesan specialists and Society colleagues. The appointed candidate will not be asked to move house twice but will live in the Vicarage at St Catherine's during their time at St Matthew's.

Bishops' Letter

There is no denying it: these are challenging times in the Diocese of Sheffield. And yet, they are also deeply hopeful and exciting times. Few doubt that by 2031 the Church of England in South Yorkshire and the East Riding will look very different from how it does



today. What that future will look like is not yet fully clear — but what *is* clear is our shared desire for renewal, change, the joyful task of sharing with all people the hope we have in Jesus Christ, and for the coming of the kingdom of God.

Our Diocesan vision and strategy is ambitious. We are asking courageous questions about our life and mission together. Will the whole people of God be mobilised for the whole mission of God? What will morale be like among lay and ordained leaders? Will church attendance decline, or will it grow in the way that we are seeing in some of our communities? Will there be more stipendiary incumbents or fewer? More congregations — or fewer? Will we raise up a dynamic and prayerful community of *Lights for Christ*?

In 2025 we launched a refreshed version of our Diocesan Strategy, seeking to be *renewed, released and rejuvenated* by God's grace and in Christ's service. A diocesan-wide consultation sent a clear message: we must increase our emphasis on seeking the welfare of our local communities — our neighbours and neighbourhoods — while retaining the heart of the 3Rs and the Diocesan Vision Prayer. This refreshed strategy reflects that calling.

The same year also marked significant moments of encouragement and investment. The Strategic Mission and Ministry Investment Board responded generously to our partnership funding request, committing £17.5 million for the revitalisation of the Diocese with immediate effect, and signalling a further £18.5 million in principle for the period 2028–2031. We also welcomed a new Bishop of Doncaster and a new Archdeacon of Sheffield and Rotherham, bringing fresh missional energy to the senior leadership of the Diocese.

With gratitude for all that God has already done, we now look forward with hope and expectation to all that God is calling us to become.

It is within this context that we are seeking to appoint a new **Oversight Minister for St Catherine of Siena, Richmond**. This is an exciting opportunity for a missional priest to work with a faithful and committed congregation in sharing the love of Jesus in one of

our poorer communities, with the support of a small 'graft' team from St Matthew's Carver St and additional resources funded by SMMIB.

This appointment invites the parish, together with the Diocese of Sheffield, to step forward into the Gospel adventure to which God is calling us. We are seeking a minister who can offer enabling and confident oversight: someone with a passion for collaboration, for developing leaders, and for empowering the whole people of God for the whole mission of God. The role will require a person who can raise up leaders to serve as [Focal Ministers](#) in every congregation, and who understands that oversight of the Body of Christ does not mean doing everything personally, but faithfully releasing the gifts and ministries of others.

We are praying that God will call to us a person with a deep sense of vocation for this task at this time: someone rooted in faith, hope and love; someone who laughs easily and lives with a zest for life in Christ; someone with a spirit of adventure, unafraid of failure and deeply reliant on the grace and guidance of the Holy Spirit. If that might be you, we would love to explore together whether the Lord may be calling you to this role.

With every blessing



The Rt Revd Dr Pete Wilcox
Bishop of Sheffield



The Rt Revd Leah Vasey-Saunders
Bishop of Doncaster



A message from Bishop Stephen

Thank you for being prepared to consider the parish of St Catherine of Siena for the next phase of your priestly ministry. This is a delightful parish with a dedicated group of parishioners who would love to see their church revitalised. The parish is supported by the Hickleton Chapter of Society priests and an addition to their number will be warmly received. There is much to rejoice



in and much to do and the ongoing commitment to Catholic life, worship and witness provides a firm foundation upon which to build. Please do be in touch with me if you would like to discuss this post with me.

The Rt Revd Stephen Race SSC Bishop of Beverley

A Message from Canon Grant Naylor SSC

I am so excited about the opportunity to work collaboratively with a new incumbent for St Catherine's. The Church has a stunning building - which is a centre for faithful Catholic worship and service for the community of Richmond. The congregation is faithful, friendly and fun. Working in the Diocese of Sheffield presents Traditional Catholic clergy with opportunities to work together to build up the Kingdom in South Yorkshire. I am greatly encouraged by this post and by the occasion to work together in order to model an Anglo-Catholic graft between St Matthew's and St Catherine's. I firmly



believe that the congregation at St Catherine's is ready for growth itself but that, with a graft of up 8-12 people, that we can turbo charge that growth in Richmond Road. The financial support secured by the Diocese of Sheffield and with support from the dedicated buildings team the new incumbent of St Catherine's will be free to focus on building a great team and quickly begin the important work of mission and evangelism from day one. For my own part I will commit myself to support the new incumbent and I believe I speak on behalf of the whole of the Hickleton Chapter (of Society Clergy) in saying that we are fully behind and supportive of the whoever God is calling to this post.

The Revd Canon Grant Naylor SSC, Vicar of St Matthew's Carver Street

Who are we seeking?

A leader with vision to build on our existing ministry. A Priest who will help us discover fresh ways of reaching out to the wider community and developing links with local schools, care homes and community groups. An Oversight Minister who will support the Diocesan vision of making disciples and transforming our society and Gods world. Someone who will support the church wardens, PCC and the congregation in developing stronger links with the local Anglo-Catholic community within the diocese



The Parish of Richmond

Richmond is a predominantly residential suburb in eastern Sheffield, South Yorkshire, situated roughly 3.5 miles from the city centre. Formerly a small settlement, it developed into a family-friendly residential area featuring 1960s housing and local amenities. It is part of the Sheffield South East constituency, serving as a quiet, diverse community.

St Catherine's originally opened in 1935 as a chapel of ease for steel workers and their families. It was subsequently rebuilt in 1945 to a design by Sir Basil Spence. Our ministry is in a working-class area of the city with both privately owned and social housing. We are close to the M1 and M18 and are in easy reach of local shopping outlets. The parish has good links with junior schools, nurseries, local businesses and the GP surgery next door as well as local authority organisations.

Parish Population	Age 0-4	Age 5-17	Age 18-64	Age 65+	Total Population
St Catherine of Siena	7%	14%	60%	19%	10,368

Source: 2021 Census.

Parish Demographics	Ethnicity: % White	Religion: % Christian	Religion: % Other Religion	Religion: % No Religion or Not Stated
St Catherine of Siena	89%	42%	3%	55%

Source: 2021 Census.

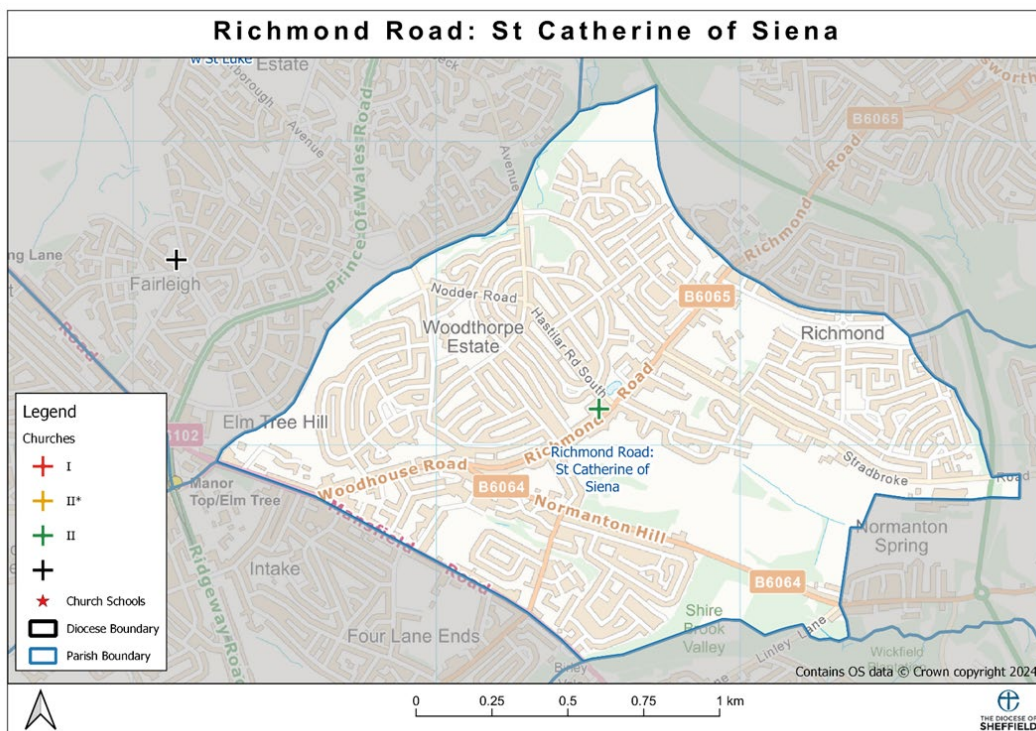
Parish Deprivation	National IMD Rank / 12,161 (1 is Most Deprived)	National IMD % Most Deprived	Diocese IMD Rank /170 (1 is Most Deprived)
St Catherine of Siena	795	6.5%	45

Source: Indices of Multiple Deprivation 2025.

Parish Statistics for Mission	Worshipping Community		Average Weekly Attendance		Funerals	Weddings	Baptisms
	Adult	Child	Adult	Children			
St Catherine of Siena	31	0	27	1	0	0	1

Source: Statistics for Mission 2025.

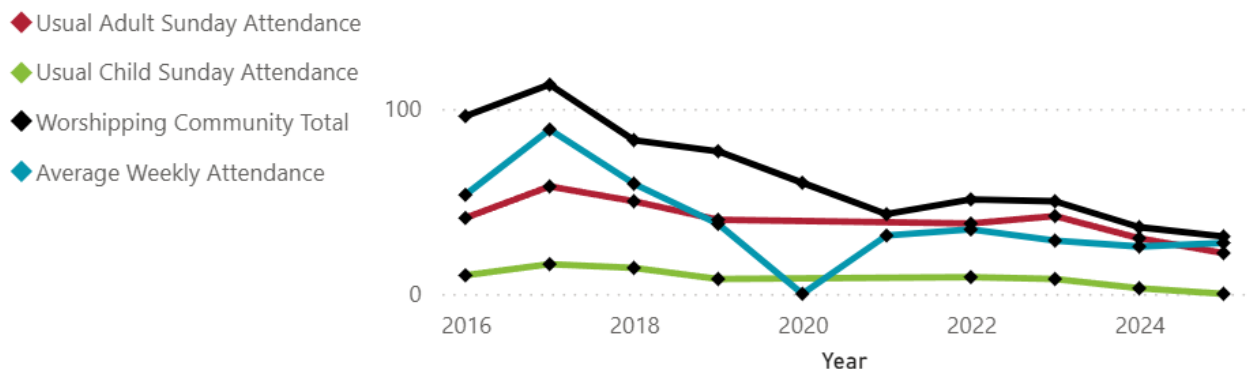
Map of St Catherine's Parish



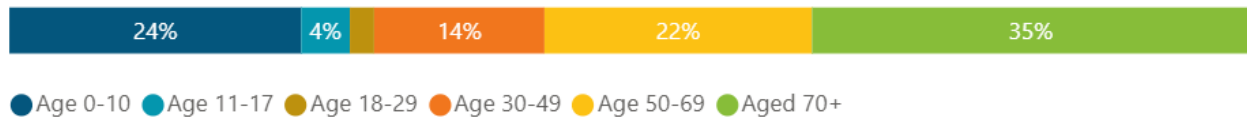
Parish Statistics

Although the Church has been through a period of decline in terms of attendance, this has now stabilising and there is great potential for a revitalised Church to be able to rebuild its worshipping community and grow even further.

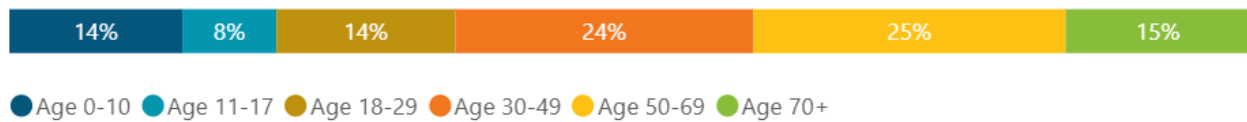
Statistics For Mission (Based on data for churches with submitted Statistics for Mission Returns)



Worshipping Community Age Profile



Parish Population Age Profile (2021 Census)



Our Worship

Our worship follows the Anglo Catholic tradition using the Roman missal with the Eucharist at its heart. Masses are live streamed on Sundays to enable inclusion of housebound parishioners. We currently use recorded music but would welcome the use of our lovely organ again.



Our Patronal festival, Remembrance Day, Christmas and Easter services are usually well supported by the community. Our annual pilgrimage to Walsingham is enjoyed by several members of the congregation and provides an opportunity for spiritual growth.



Community Engagement

Our coffee shop outreach provides a focal point for many within the parish especially for disabled clients of a local day centre and many vulnerable people living in the area.

We also have links with the local authority which includes Festival of Light, the HAF (Holiday Activities and Food) games during the school holidays and events linked with Richmond forum.



We host twice yearly concerts given by Dronfield Brass Band which provide mutual fund-raising opportunities. Many groups within the local community benefit from hiring rooms within St Catherine's for recreational purposes.

Our monthly Mothers union meetings are open to the community and they support the local women's refuge and other deserving causes, having recently supported a Ukrainian appeal following a presentation by an outside speaker

We actively support local foodbanks with regular food donations, including our harvest offering



HELP FOR UKRAINE	
For Christmas 2024, the volunteer group Helping Ukrainian Friends will make its 19th delivery of aid to support those impacted by the war in Ukraine.	
PLEASE HELP BY DONATING	
FOOD	Non-perishables like rice, flour, pasta, tinned food (soups, fish, meat), tea, coffee and sugar.
MEDICINES	Paracetamol, multivitamins, antiseptic wipes, expectorants
PERSONAL HYGIENE PRODUCTS	Soap, toothpaste, toothbrushes, female sanitary products, nappies, deodorant sticks
EQUIPMENT FOR HOBBIES	Sports equipment, art supplies and musical instruments for displaced children and orphans.
ELECTRONICS	Torches, power banks, LED lights, batteries, and phones / tablets / computers (factory reset and in good working order)
WHERE & WHEN TO DONATE?	
By 9 November 2024 please See St. at Church	



Mission and Opportunities



We need to re-establish our engagement with children in the parish. We would hope to provide age and ability appropriate worship opportunities including after school activities. Our link with local junior schools could be widened to include the senior school within the parish. In the past the local schools have been into church for Easter and Christmas events and the past priest regularly took assemblies. We currently have a link with one local care home but hope to widen this to include the other two homes to provide ministry to their staff, residents and families.



The East Local Area Committee & Community Partners invite you to the:

Tree Of Hope

Light Switch-On Event

Friday 29th November, 2024
From 4pm until 6pm

St Catherine Of Siena, 300 Hastillar Road
South, S13 8EJ

Free Food - Wreath Making- Craft Stalls - Brass
Band - Santa's Grotto!

Supported & Funded by Richmond Councillors' Ward Pot Grants

Our Building

St Catherine's is a beautiful and iconic grade II listed building designed by Sir Basil Spence, which has an excellent narthex, hall and catering facilities. The roof has presented us with significant challenges with water ingress. However, we are delighted to report that this should not be a major area of concern for the new incumbent. Supported by our architect, and superb Diocesan buildings team we have secured almost £500,000 from Heritage England in funding and the work to secure the roof has started and should be finished in summer 2026. Thanks be to God!



The SMMIB funded project

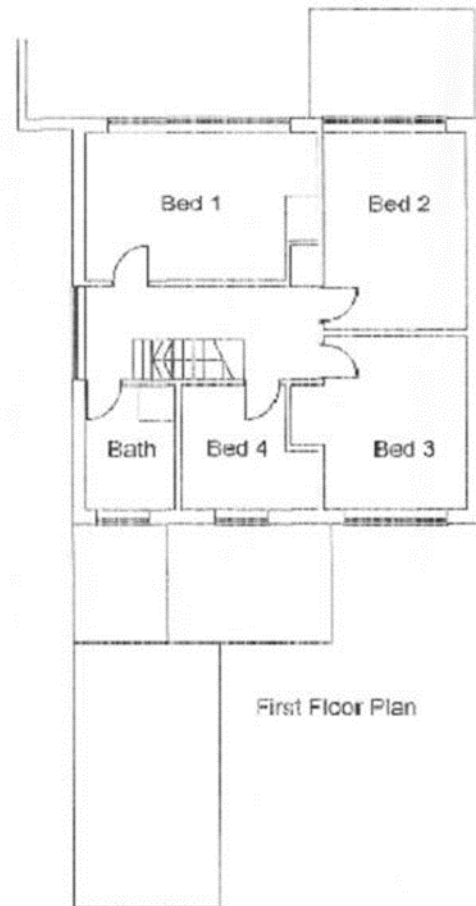
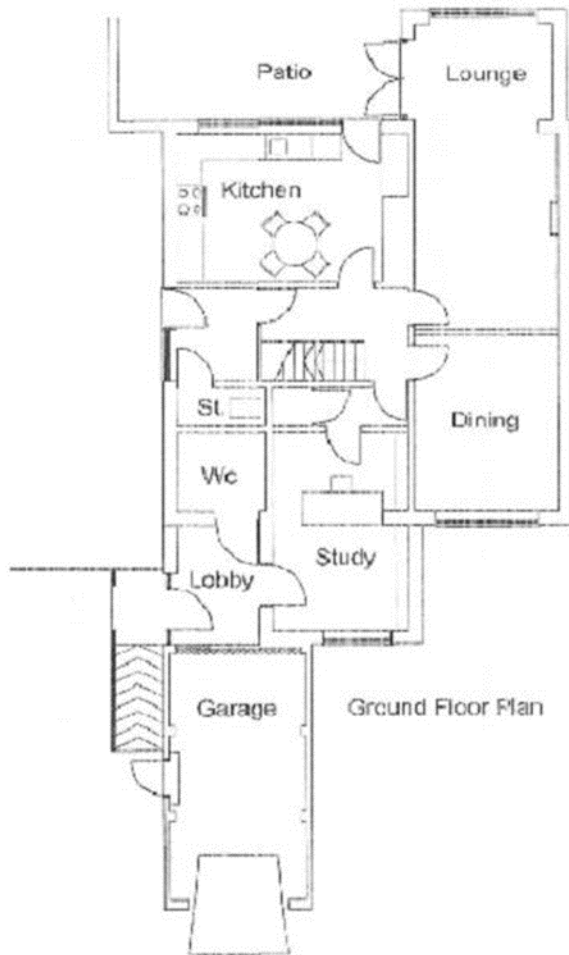
As has been mentioned, the new priest and his team will be funded by a grant from national church through Strategic Mission and Ministry Investment Board (SMMIB). This funding provides a stipend until June 2031 as well as support workers and finance for buildings as previously outlined.

In addition, there will be support from the project core team in relation to mission, financial management and buildings advice.

In return we have promised a growth in discipleship in each of our funded projects of 80-100 disciples consisting of adults and u18s and an increase in the number of regular givers. These targets are usual in SMMIB funded projects and full support will be given in approaching them, both in terms of the team in the parish, the core team and the cohort of other clergy engaged in similar funded projects across the diocese.

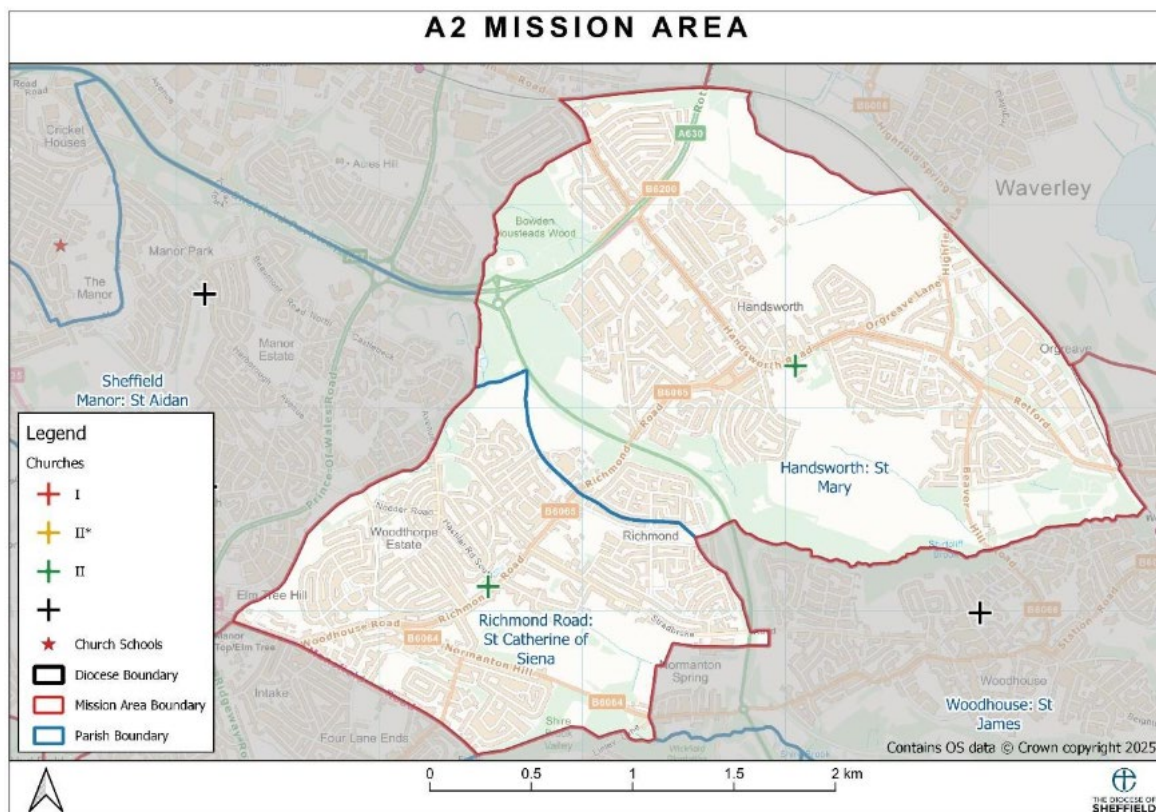
Vicarage Info

St Catherine's Vicarage is a modern, purpose-built vicarage which is well insulated, with separate working and living areas (with separate access doors to each). It is handy for the Church and has a garage and car-parking.



The Richmond and Handsworth Mission Area

The parishes of Richmond and Handsworth, within the deanery of Attercliffe, form the A2 Mission Area. St Mary's Handsworth is the neighbouring contiguous parish with its own incumbent. The parishes, although distinct and independent, offer many opportunities for working together. Fr Keith Johnson SSC is keen to collaborate on Children's, Youth and Families ministry and has indicated that St Mary's would be willing to explore finding more funding to make the 0.6 Centenary Project worker for St Catherine's full time and a joint post.



Fr Keith Johnson of St Mary's Handsworth writes:

Handsworth is more than an ex-mining community, it has a proud history and maintains something of a village flavour. It is mainly a settled working class area with a number of schools, businesses, services, shops and industrial sites. It is close to the M1 and has good transport links. St Mary's is a busy church set in extensive grounds with a long-standing tradition of social engagement through church and the community hub. The pandemic hit us hard but we are recovering. The congregation is committed, supportive and welcoming





Role Description

Details of Post

Role Title:	Priest in Charge of St Catherine of Siena, Richmond Road and Oversight Minister in the A2 Mission area.
Name of Benefices:	Richmond, St Catherine of Siena
Deanery:	Attercliffe
Archdeaconry:	Sheffield and Rotherham

Context

This is a Mission Area of 2 parishes with 2 Oversight Ministers.

The A2 Mission Area brings together two traditional Catholic parishes, serving some of the poorer area of the city of Sheffield within the Attercliffe deanery.

St Catherine's is entering a new phase in its life as the Diocese of Sheffield recognizes its potential. Working with the congregation, the diocesan family, and St Matthew's Caver Street, the new incumbent will oversee significant strategic investment board funding in the parish and will be able to use this investment to build and appoint a paid staff team in their first year.

The new incumbent will receive support from St Matthew's Carver Street working with them to draw new people into the parish of St Catherine's. St Catherine's parish is contiguous with another Society Parish, St Mary's Handsworth, where a supportive colleague is keen to pool resources for the flourishing of the whole A2 Mission area.

The role of Oversight Minister is to work in partnership with the Bishop, fellow Clergy, Focal Ministers and Lay Leaders, and all the baptised members of the diocese of Sheffield, to help realise the Diocesan strategy to be a flourishing and generous Diocese of Sheffield by 2025: Renewed, Released and Rejuvenated!

We seek to be a Diocese Renewed in the grace and power of God, by a constant reliance on the Holy Spirit. We seek to be a Diocese Released from the constraints which hold us back from mission, and released, as the whole people of God for the whole mission of God. We seek to be a Diocese Rejuvenated — partly through a dedicated and sustained programme of outreach to families, children and young people, and partly through the creation of 75 new congregations, including 25 in our church schools.

Role Purpose

The role of the stipendiary incumbent is defined 'semi-episcopally' as an 'Oversight Minister', to grow healthy local churches by working collaboratively with others in four interrelated ways:

- 1) To oversee mission and ministry in the Mission Area.
- 2) To resource the whole people of God for the whole mission of God.

- 3) To ensure mission and ministry in the Mission Area reflects the Christian faith as understood in the Church of England.
- 4) To identify, nurture and develop leaders of the Mission Area.

The General responsibilities for Oversight Ministers can be found on the Diocesan website and the Person Specification for Oversight Ministers is Found in Appendix 1.

The aim of this role description is to clarify expectations and parameters, to ensure that the role holder has the best possible chance to flourish. The specific responsibilities will be reviewed and refreshed regularly as part of the MDR process.

Specific Responsibilities

- 1) To oversee mission and ministry in the Mission Area.
 - To share in the cure of souls across the whole Mission Area, developing strategies for connecting with, serving and witnessing to those who are resident in the area.
 - To provide oversight, guidance and leadership, fostering a culture and practice of collaboration and teamwork and enabling the discernment, development and implementation of vision in the form of a Mission Action Plan.
 - To work with colleagues at St Matthew's Carver Street in order to share best practice and encourage a number of people to join you in the work at St Catherine's.
 - To work collaboratively with St Mary's Handsworth in building up the Kingdom of God in this place.
 - To appoint and oversee the implementation of a new parish staff team including administrator, children and families worker and parish nurse.
- 2) To resource the whole people of God for the whole mission of God.
 - To enable every church member to discern, develop and grow in the exercise of the gifts given them by God;
 - To enable all God's people to grow in their understanding of the mission of God and in confidence in their own calling as full participants in the outworking of that mission;
 - To work with others to ensure a flourishing children and youth ministry within reach of every young person in the Mission Area;
 - To establish functional leadership structures which enable the flourishing of properly collaborative leadership and which give value to the contributions of all those holding responsibility.
- 3) To ensure mission and ministry in the Mission Area reflects the Christian faith as understood in the Church of England.
 - To foster a working understanding of Christian faith and practice in the Church of England.
 - To have regard to the calling and responsibilities of the clergy as described in the Canons, the Ordinal, the Guidelines for the Professional Conduct of Clergy, and other relevant legislation and guidance.
 - To be ministers of both word and sacrament.



Appendix 1.

Person Specification-

An Ordained Minister

		essential	desirable
Qualifications and personal attributes	<ul style="list-style-type: none"> Recommended by their Bishop as suitable for Common Tenure Primary Responsibility. 	✓	
	<ul style="list-style-type: none"> Shows capacity to foster collaboration between lay and ordained ministers (licensed, commissioned and authorised) and lay leaders. 	✓	
	<ul style="list-style-type: none"> Committed to mutual flourishing envisaged in the Five Guiding Principles. 	✓	
	<ul style="list-style-type: none"> In Holy Orders for not less than three years. 		✓
	<ul style="list-style-type: none"> Experienced in leadership. 		✓
	<ul style="list-style-type: none"> Able to demonstrate the calling, character, gifts and skills to oversee a number of local churches and ecclesial communities in a range of parishes, institutions and networks. 		✓
Character	<ul style="list-style-type: none"> Models leadership on the example of Christ. 	✓	
	<ul style="list-style-type: none"> Collaborative. 	✓	
	<ul style="list-style-type: none"> Excited about mission and the diocesan vision and strategy. 	✓	
	<ul style="list-style-type: none"> Committed to the breadth of tradition in the Church of England and mutual flourishing. 	✓	
	<ul style="list-style-type: none"> Strong and mature personal faith, nourished by well-established patterns of prayer, worship, reflection and study. 	✓	

	<ul style="list-style-type: none"> Accountable. 	✓	
	<ul style="list-style-type: none"> Open to lifelong learning and development. 	✓	
	<ul style="list-style-type: none"> Recognised as resilient, stable and trustworthy. 	✓	
	<ul style="list-style-type: none"> Self-aware and self-accepting. 	✓	
	<ul style="list-style-type: none"> Cares for self and for key personal relationships. 	✓	
Experience	<ul style="list-style-type: none"> Building and facilitating teams, shared decision-making. 	✓	
	<ul style="list-style-type: none"> Energising and enabling others in forming vision and in strategic planning 	✓	
	<ul style="list-style-type: none"> Working collaboratively, exercising accountability and delegation. 	✓	
	<ul style="list-style-type: none"> Encouraging trust in God. 	✓	
	<ul style="list-style-type: none"> Discerning, nurturing and developing the skills of others. 	✓	
	<ul style="list-style-type: none"> Helping others shape and engage in mission and evangelism appropriate to the local context. 	✓	
	<ul style="list-style-type: none"> Knowledge, understanding and experience of diocesan and church structures, policies, and practices including Safeguarding, finance and governance 	✓	
	<ul style="list-style-type: none"> Taking responsibility for personal well-being and nurture. 	✓	
	<ul style="list-style-type: none"> Enabling others in their practice of self-care and personal development 	✓	
	<ul style="list-style-type: none"> Leading, managing and consolidating change. 		✓
	<ul style="list-style-type: none"> Conflict management. 		✓
	<ul style="list-style-type: none"> Entrepreneurial skills, including responsible risk-taking. 		✓

	<ul style="list-style-type: none"> • Holding the big picture. 		✓
	<ul style="list-style-type: none"> • Enabling others in reflection, review and developing the mission and ministry of the church. 	✓	
	<ul style="list-style-type: none"> • Building community through relationships of trust. 	✓	
	<ul style="list-style-type: none"> • Inter-personal skills, including listening, communication, and exercising emotional intelligence. 	✓	
	<ul style="list-style-type: none"> • Organisational skills and administration. 		✓
	<ul style="list-style-type: none"> • Working with different generations and inter-generationally. 		✓
	<ul style="list-style-type: none"> • Pastoral supervision and reflective practice. 		✓
	<ul style="list-style-type: none"> • Coaching and mentoring. 		✓
	<ul style="list-style-type: none"> • Working with different theological perspectives, church tradition, culture and life experience. 	✓	
	<ul style="list-style-type: none"> • Initiating and enabling working relationships between church, Mission Area, deanery and diocese. 		✓
	<ul style="list-style-type: none"> • Handling a complex workload, prioritising and balancing competing demands. 		✓
	<ul style="list-style-type: none"> • Making appropriate pastoral provision for leaders. 		✓