



THE DIOCESE OF
SHEFFIELD

The Parish of Sheffield Manor

St Aidan's and St Swithun's Churches
and Temple Park Centre

Website: www.manorparish.co.uk

Facebook: [Sheffield Manor Parish](#)



This parish information pack has been compiled to help give a flavour of the life and vision of the Manor Parish for potential Associate Priest applicants.

It comprises excerpts from our Parish Profile and most recent annual report as well as other information relevant to the role.

We hope that you find it informative and helpful in exploring whether God may be calling you to join us in this role.

Contents

| | |
|---|----|
| Bishop's Letter..... | 3 |
| An Introduction to The Parish..... | 5 |
| The Parish | 5 |
| About Us..... | 7 |
| Our 3 Sites..... | 7 |
| St Aidan's..... | 7 |
| St Swithun's..... | 8 |
| Temple Park Centre | 9 |
| Who's Who? | 10 |
| Team Rector's Report..... | 11 |
| Churchwarden's Report | 16 |
| Children's & Youth Work..... | 18 |
| Community Kitchen..... | 20 |
| Manor Church & Community Project..... | 22 |
| Haven@Table 2025 Report..... | 25 |
| Community of St Paulinus & Cathedral Partnership..... | 26 |
| Housing Provision..... | 27 |



Bishop's Letter

There is no denying it: these are challenging times in the Diocese of Sheffield. And yet, they are also deeply hopeful and exciting times. Few doubt that by 2031 the Church of England in South Yorkshire and the East Riding will look very different from



how it does today. What that future will look like is not yet fully clear — but what *is* clear is our shared desire for renewal, change, the joyful task of sharing with all people the hope we have in Jesus Christ, and for the coming of the kingdom of God.

Our Diocesan vision and strategy is ambitious. We are asking courageous questions about our life and mission together. Will the whole people of God be mobilised for the whole mission of God? What will morale be like among lay and ordained leaders? Will church attendance decline, or will it grow in the way that we are seeing in some of our communities? Will there be more stipendiary incumbents or fewer? More congregations — or fewer? Will we raise up a dynamic and prayerful community of *Lights for Christ*?

In 2025 we launched a refreshed version of our Diocesan Strategy, seeking to be *renewed, released and rejuvenated* by God's grace and in Christ's service. A diocesan-wide consultation sent a clear message: we must increase our emphasis on seeking the welfare of our local communities — our neighbours and neighbourhoods — while retaining the heart of the 3Rs and the Diocesan Vision Prayer. This refreshed strategy reflects that calling.

The same year also marked significant moments of encouragement and investment. The Strategic Mission and Ministry Investment Board responded generously to our partnership funding request, committing £17.5 million for the revitalisation of the Diocese with immediate effect, and signalling a further £18.5 million in principle for the period 2028–2031. We also welcomed a new Bishop of Doncaster and a new Archdeacon of Sheffield and Rotherham, bringing fresh missional energy to the senior leadership of the Diocese.





With gratitude for all that God has already done, we now look forward with hope and expectation to all that God is calling us to become.

It is within this context that we are seeking to appoint a new **Associate Priest for Sheffield Manor Parish**. This is an exciting opportunity for a missional priest to work as part of a ministry team, with a faithful and committed congregation in sharing the love of Jesus in one of our poorer communities, with the support of Sheffield Cathedral and the Community of St Paulinus.

This appointment invites the parish, together with the Diocese of Sheffield, to step forward into the Gospel adventure to which God is calling us. We are seeking a minister who can offer enabling and confident oversight: someone with a passion for collaboration, for developing leaders, and for empowering the whole people of God for the whole mission of God. The role will require a person who can raise up leaders to serve as [*Focal Ministers*](#) in every congregation, and who understands that oversight of the Body of Christ does not mean doing everything personally, but faithfully releasing the gifts and ministries of others.

We are praying that God will call to us a person with a deep sense of vocation for this task at this time: someone rooted in faith, hope and love; someone who laughs easily and lives with a zest for life in Christ; someone with a spirit of adventure, unafraid of failure and deeply reliant on the grace and guidance of the Holy Spirit. If that might be you, we would love to explore together whether the Lord may be calling you to this role.

With every blessing

The Rt Revd Dr Pete Wilcox
Bishop of Sheffield

The Rt Revd Leah Vasey-Saunders
Bishop of Doncaster



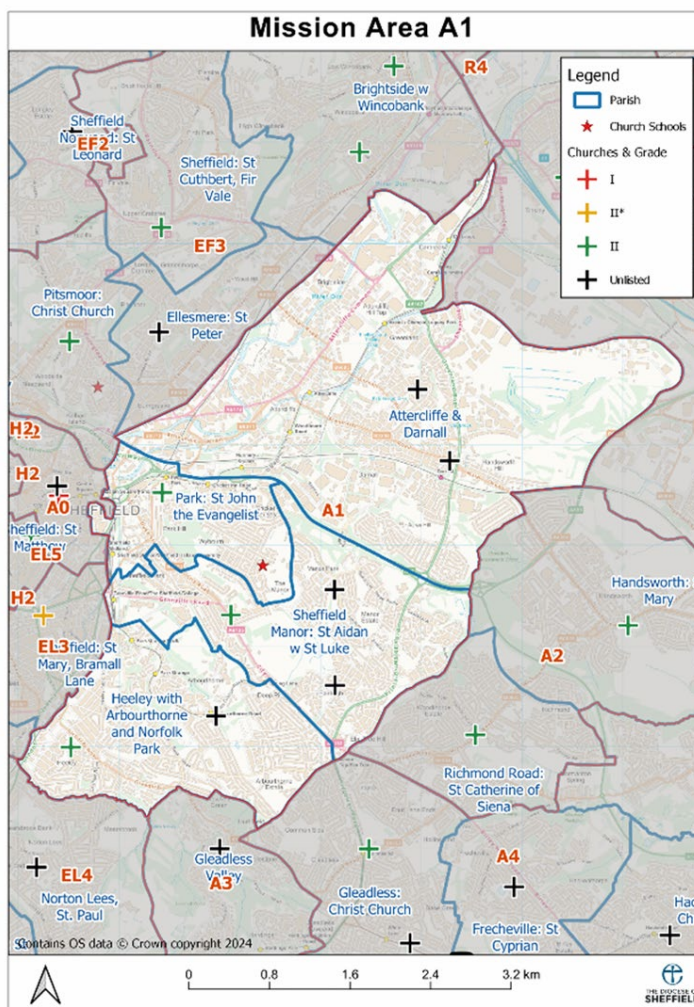


An Introduction to The Parish

The Parish

The Parish of Sheffield Manor is part of the Attercliffe Deanery within the Diocese of Sheffield and has a population of around 15,500 and growing. It forms part of the Manor Castle electoral ward in S E Sheffield, close to city centre. Predominantly residential, the eastern part is comprised of a large, low-rise council estate, which has been the focus of major regeneration to provide good quality housing comprising social housing, rented & owner-occupied. Large areas of the estate were demolished, and there is now an ongoing programme of redevelopment.

The western part has an increasing number of houses in multiple occupation, and private landlords, with a varied transient population, including students with some small areas of local authority/housing association accommodation. There is a large development of modern new builds that has just been completed along Manor Lane, close to St Aidan's Church, bringing new families into the area.



Map of the Mission Area with church locations





As for the socio-economic picture, Manor Parish is at the heart of the Manor Castle Ward, described as a struggling estate with high urban adversity, over 40% living in difficult circumstances and high levels of hardship, mainly among the younger population. However, there are increasingly new people and new families moving into the area, many of them are young professionals.

The area to the east of the parish including Granville Road, City Road and the area bordering on Norfolk Park, has a different social demographic. This residential area comprises more privately owned properties and its proximity to the city centre attracts more professionals and young families as well as retired homeowners, asylum seeker housing and other houses in multiple occupation, including student accommodation. This part of our parish is also home to two highly respected centres of education - the Sheffield College City Campus and All Saints Catholic High School.

Sheffield Manor Parish Profile Statistics

| Parish Population | Age 0-4 | Age 5-17 | Age 18-64 | Age 65+ | Total Population |
|-------------------|---------|----------|-----------|---------|------------------|
| Sheffield Manor | 966 | 2,424 | 10,048 | 1,902 | 15,341 |

Source: 2021 Census.

| Parish Demographics | Ethnicity: % White | Religion: % Christian | Religion: % Other Religion | Religion: % No Religion or Not Stated |
|---------------------|-----------------------|--------------------------|-------------------------------|---|
| Sheffield Manor | 71.8% | 38.7% | 12.0% | 48.5% |

Source: 2021 Census.

| Parish Deprivation | National IMD Rank / 12,307 (1 is Most Deprived) | National IMD % Most Deprived | Diocese IMD Rank /171 (1 is Most Deprived) |
|--------------------|--|---------------------------------|---|
| Sheffield Manor | 196 | 2% | 13 |

Source: Indices of Multiple Deprivation 2019.





About Us

In the Manor Parish we celebrate the wonderful diversity of human life, and want to serve those among whom we live in working for justice, inclusion, fairness and wholeness, to demonstrate the love God has for the world.

Intersectional inclusivity is an important value for us, and we were one of the first parishes in Sheffield Diocese to affiliate with Inclusive Church. We understand that we are called to engage with our world, to challenge the barriers which seem to separate the sacred from the secular or which try to define us according to various categories.

Being 'church on the Manor' we believe that Jesus came that we might have life in all its fullness (John 10.10) and do what we can to join in with God's work of transformation and hope, especially where people are, or feel, excluded, marginalised or misunderstood within the church as well as in wider society.

We do recognise that we don't always get it right but are committed to educating ourselves and to putting our words into action, through our life as churches and partnering with other local organisations.

Our 3 Sites

Our Parish comprises of 3 church buildings. St Aidan's, St Swithun's and Temple Park Centre. Each of our buildings is situated in a distinct part of the parish and has a unique role in serving it. We are keen to create a pattern of worship, sacrament, prayer and community life across our buildings.

St Aidan's

Until its closure in 2024 due to a leaking roof and broken boiler, St Aidan's was the only one of our church buildings with a CofE congregation since the Covid pandemic.

There was a stable congregation of around 25 adults and 10 children on average and a wider worshipping community of around 86. This





congregation comprised a diverse mixture of ages and ethnicities. However, the building's community and missional use had reduced significantly post covid.

The congregation moved to St Swithun's Church (where there was not an existing CofE congregation) in 2024, although some members of the worshipping community did not move across with us, and we look forward to welcoming them back when we reopen.

The west of the parish, where St Aidan's is, has recently seen a significant demographic shift, with young professionals and families priced out of other areas moving in. A large new housing development of private homes has also been built on Manor lane.

While we want to keep the momentum going at St Swithun's, where the congregation has seen rapid growth and new energy particularly from within the estate community, there is an appetite for St Aidan's to reopen again. We plan to maintain a united parish life but to have services and activities that better reflect the localities of our churches on the reopening of St Aidan's.

Work on repairs and renovations commenced on the building in Autumn 2025, and we are aiming for a phased reopening from July 2026, beginning with Sunday evening services and summer weddings, hoping for wider use from September 2026 including midweek community outreach and services. As we look forward to reopening, we are particularly excited to strengthen our partnership with Manor Lodge School, just across the road. The Cathedral is also supporting us in beginning an after school 'Choir Church', planned to run from September 2026.

St Swithun's

St Swithun's is currently the base for our Sunday morning congregation. This congregation reflects far more strongly the estate community in the east of the parish than the previous congregation at St Aidan's, and that is where most of our growth has come from (we now average 50-60 in attendance on a normal Sunday).

St Swithun's is also the base for our partners S2 Foodbank, and our new Community Kitchen initiative has helped the collaboration between our organisations deepen and seen more people who use the foodbank cross over into the church community, which has been a joy.





St Swithun's also hosts a monthly Anglican Shona Mass which gathers Christians from across the city to a service in the Shona language. We also share our space with a Seventh Day Adventist Church who use the building on Saturdays.

Temple Park Centre

Temple Park Centre, formally William Temple Church, was a Methodist/Anglican partnership. It is now a community Centre primarily run by Manor Church and Community Project, which is an ecumenical charity within the parish between the Methodists, Anglicans and URC. The charity is chaired by our Team Rector alongside Revd Debora Marschner, the local Methodist Minister, and employs a Community Cohesion and Outreach Worker, Lisa Wigfield, who works from the building and in the wider parish.

The centre hosts regular community events, including weekly lunch club, warm space and dementia café, and we have recently begun weekly morning prayer there which is attracting a small community around it.





Who's Who?

So many people help to run and support our parish life. Below is just a snapshot of some of the people you will be working with.

Staff

Team Rector- Revd Lucy Sablan

Assistant Curate- Revd Sam Tudor

Lisa Wigfield- (MCCP) Community Cohesion and Outreach Worker

Nicola Smith- Parish Support and Development Worker P/T

Vicky Hall- Cleaner P/T

Sarah Short- Community Kitchen Mission Enabler P/T

Churchwardens

Julie Child- Cavill

Sioned-Mair Richards

Parish Safeguarding Officer

Victoria Woodley

PCC (2025-2026)

Revd Lucy Sablan

Revd Sam Tudor

Julie Child- Cavill

Sioned-Mair Richards

Martin Lawton

Jenny Richardson (Deanery Synod)

Lilian Tootell

Sally Griffin

Ruth Mills

Children's and Young People's Team

Claire Dalpra (School Assemblies Lead)

Andrew Wooding

Vickie Woodley

Lilian Tootell

Julie Child-Cavill





Team Rector's Report

The Revd Canon Lucy Sablan

This year has been my first year with Manor Parish and it has been a true joy to become a part of such a wonderful congregation and community.

It has been beautiful to see our congregation growing at St Swithun's over this last year, exciting new community initiatives taking place and closer partnerships with local organisations emerging.

Below is just a snapshot of some of the joys and challenges of this last year, along with some of our hopes for the coming year.

Services and Occasional offices

Our Sunday congregation, which in early in 2025 was affectionately referred to as 'St Aidan's at St Swithun's', has now very much become a vibrant congregation in its own right with new people joining us from the Manor estate. Sunday attendance rose from 25 a week on average in January, to 51 a week on average in November (and even more in December due to Christmas services, but that doesn't feel like a fair comparison).

We have had the joy of several new people taking on roles in leading and supporting our services, and it's a privilege to see people using their gifts for the church. I am so grateful to all in the AV team, readers, wardens, refreshments team, welcomers, Ark team, kid's team, worship leaders, preachers and everyone who makes worshipping together such a special part of the week.

A particular joy of mine is the monthly all-age Eucharist services that we began this year. Witnessing young people helping to lead us in our worship is a true blessing.

We have also tried to begin a pattern of prayer through the week across our sites this year. Wednesday Night Prayer on Zoom continues monthly, and Monday morning prayer is held at St Aidan's, Thursday mornings at Temple Park and (more recently), evening prayer after community kitchen



at St Swithun's on a Thursday. It is really important to me that we anchor our rhythm of life as a parish community in prayer, and it is so special to get to do that with people across our parish each week.

As we look to reopening St Aidan's we want to embrace a rhythm of worship, sacrament, prayer, community life and outreach across our buildings. In this spirit, we are currently planning to keep our Sunday morning service at St Swithun's at 10:30am, but add in a 6pm service (with refreshments from 5:30pm) at St Aidan's. We hope that this will mean that we can maintain the energy and growth at St Swithun's while also offering something a bit quieter and more reflective at St Aidan's for those who would like it. In addition to these Sunday services, we are looking to slowly introduce midweek services – including a midweek lunchtime Eucharist, and the ARK team are looking to trial ARK at St Aidan's at a new time. Watch this space.



We have had a steady stream of baptisms at St Swithun's this year, both after our main Sunday service for those in the wider parish and (very joyfully) a number of our congregation members in the main service as well. It is great to have our baptism families from the wider parish coming along to ARK services, and it has been lovely to get to know them. We expect the number of baptisms to increase once St Aidan's reopens.

We have only had 1 funeral and no weddings in 2025. This is a shame as we would of course love to serve our parish in these ways, however we expect to see more once St Aidan's is in operation.

Community

This year we began our community kitchen at St Swithun's. The team who run it are incredible. The love, joy and sense of community in that space is



truly sacred. The food is also very tasty and it's a great provision to our community, and a way to partner with our friends at S2 Foodbank.

Wanting to see this amazing work continue well supported, we have been fortunate to receive funding to pay Sarah to run the community kitchen one day a week, and we have exciting plans for the community kitchen across the parish.

We have had some lovely opportunities to host and be hosted by our local primary schools for assemblies and educational school visits. On St Swithun's day we had the choir from Prince Edward's school lead us in a service of compline, and we look forward to partnering more closely with our schools for things like this in the near future.

St Aidan's Renovation

This project has been a much bigger time commitment than I anticipated. However, rather than do quick repairs and get back into the building, I thought we should take the opportunity to do a thorough refurbishment to help us better serve the community and reopen as a home for worship, prayer, community and life events that will stand the test of time. We also hope that a higher quality facility will help us to generate revenue through room rental and events hire.

In 2025 we did a lot of preparatory work (lots of surveys and small repairs), alongside planning and fundraising for the scheme as a whole.

In early 2026 we have seen the commencement of work on the roof and other external repairs to make the space wind and watertight. The disabled toilet renovations have also begun, and plans for the lounge and kitchen to be refurbished and cloister redecorated are underway. We have also had plans for a net zero heating scheme drawn up.



The works on the accessible toilet underway



In the coming year we hope to have the main renovations of downstairs complete (including a refurbishment of the cloister, and redecoration of the main worship area), and have a new heating system installed. Plans for upstairs are also in process, and we hope to see them realised in 2027.

We plan to have a phased reopening of the building from Easter 2026, with services beginning regularly in July and community activities from September.

A note on finances

Finances continue to be a struggle, while the building work and renovations at St Aidan's have been covered through grants and private donations, the running costs of an increasingly busy parish life without an income from that building has been hard.

Thank you to those who generously give on a Sunday (our Sunday plate giving is up this year which is wonderful) but we would love to encourage more people to give by standing order and through the Gift Aid scheme so that we can maximise donations and budget more easily.

Financial planning and diversification of income will be a priority and ongoing challenge this coming year.

For those who can afford it, giving financially really does help us, but we understand that many give in other ways and we are very grateful for that too.

The Team

This year has seen a lot of people both faithfully continuing to serve and stepping into new roles in the church. As the team shifts and grows we are very lucky to have new energy, gifts and expertise to enrich our parish life.

In our clergy team this year, in addition to me joining as Team Rector, we have had the privilege of Sam joining us as Curate. He has been a true





asset to our community and a real help to me. We also have funding for a half time Associate Minister and will be looking to recruit for that in 2026.

In terms of our staff team, we are as ever indebted to our amazing Support and Development Officer Nicola, and our cleaner Vicky. Both of who's work often goes unseen but keeps us running. As I mentioned above, we also secured funding for Sarah to run our community kitchen as a paid role one day a week. As we continue to partner with MCCP at Temple Park, Lisa,

the Community Cohesion & Outreach Worker, has been getting more involved in wider parish life including baptism assisting, and will be working closely with our Churchwarden Julie to explore opportunities for outreach at St Aidan's.

Our long serving Churchwarden Sue stood down last year, but we were lucky to retain Sioned. We also welcomed Julie as a churchwarden who has been learning the ropes from Sioned and getting stuck in this year and will be focussing on St Aidan's when it reopens. We are hoping to recruit a third churchwarden, as per our decision at the last APCM, for 2026.

Vickie became our Safeguarding Officer this year, and we are delighted to have someone with a lot of safeguarding experience in the role.

A huge thanks (again) to all involved in serving in all areas of church life.

Finally, I want to say a huge thank you for welcoming me so well into the church family and parish. I feel so grateful to get to serve my ministry in the Manor. I hope this report has lots of things that bring joy to those who read it, and that we can continue to discern God's direction for us together.





Churchwarden's Report

Sioned-Mair Richards & Julie Child-Cavill

It's been an eventful year for us both as we've set off working in a new team. We went to Rotherham to be sworn in as new church wardens, followed by going on the course for new church wardens. We were left a bit scared of all the responsibility that the role involves. Initially we phoned Sue Williams a lot as we looked for information. Big thanks, Sue. Nicola, our Support and Development worker proved invaluable at nudging us for things we knew nothing about. We made mistakes, we missed things, but we have come through the year in one piece and hope to keep growing into the role.

It has been a joy to work with our new Rector, Lucy, and then a few months later, to be joined by Sam our curate. Both have energy, commitment and enthusiasm which is infectious. Lucy has a vision for the parish which we share and which gives us a plan to work to.

Lucy's enthusiasm has seen the congregation at St Swithun's grow steadily. We have more young families. It is great to see so many children going out to Sunday club and even to hear their enjoyment through the slightly open folding doors! There has been a rise in communicants and of people willing to be on the rota for welcoming, reading, assisting with communion and the AV system. We have settled into a rhythm of ARK at the beginning of the month, and a mid-month All Age Eucharist. Lucy has been explaining the various stages of the communion to help newcomers understand what we are doing as it can be baffling. We had a DIY nativity at Christmas which was approached enthusiastically by all and Sioned finally got to be an angel.

There have been changes to the fabric of the church. We have had new wiring in the church and finally sorted the ceiling lights. The side Chapel has been reclaimed, as has the vestry for sole church use. We have a children's corner in one of the alcoves and a welcome area in the foyer with comfy sofas. Thank you to Martin for his work on the AV system.





The big innovation has been the Thursday Community Meal, prepared by Sarah, Claire and their volunteers. This works in conjunction with the S2 Foodbank who provide excess produce. This has brought new people into the building and demonstrated God's love/Our love in a tangible way, as well as being delicious. The Burns Night was particularly enjoyed. A big thank you to Sarah and Claire.

Meanwhile work at St Aidan's has progressed more slowly than we hoped or expected, not helped by the constant rain since January. As we write the roof is finally being weather-proofed, the accessible toilet is being repaired, the lounge and kitchen area transformed, and the new heating system agreed upon.

We were able to hold a beautiful candlelit carol service at St Aidan's before Christmas. The atmosphere was joyful and made us appreciate the majesty of the building. We are looking forward to returning once the building works are completed.

Week by week we continue to set up for church services (helped by David and Christine) and keep the building running. This involves lots of appointments with electricians, plumbers and other tradespeople. We also liaise with the other users of the buildings from the Seventh Day Adventists to scouts and cubs.

In anticipation of the reopening of St Aidan's, we have split our two churches between us so that Sioned takes responsibility for St Swithun's and Julie for St Aidan's. Julie also helps with activities at the Temple Park Centre.

As we said at the beginning, this has been a year of learning for us. We have been helped by all the members of the PCC, thanks again to Sarah for taking the Minutes. And by the kindness and support of all the congregation. We are hoping to find a third churchwarden to develop this year who can take over properly next year when Sioned steps down. Do consider if this could be you! Thank you everyone.



Children's & Youth Work

The Children's and Youth Leaders

Sunday Club and Ark continued throughout 2025 led by Andrew Wooding, Claire Dalpra, Julie Child-Cavill, and Vickie Woodley with support from Gemma Wellum on craft ideas for Ark. Rachael Oludipe comes to our planning meetings and helps in Sunday Club when she can and Lilian is a great support with Ark.

We are always looking for more leaders and helpers - especially with St Aidan's opening soon – so do pray about whether God might be calling you to children's work.

Numbers for Ark (between 25-50) and Sunday Club (between 5-10) have risen over the year, for which we are very thankful. With support from Lucy and Sam, we introduced an adult discussion during Ark (during craft) which is proving popular. Our thanks to the technical team who run sound/visual for Ark; it's so much easier than CD players and printed orders of service!

2025 began with the Breathe Deep diocesan youth day in Sheffield Cathedral. Thanks to Andrew for organising the three young people attending. In March, Justin wrote and delivered a short talk at the Joined Up diocesan conference for



children's and youth workers, which included his reflections following the death of a fellow pupil at his school All Saints in February.

After Easter, we welcomed Y1 children from Pipworth School on their annual visit to St Swithun's. Claire was also asked into Manor Lodge school several times during 2025 to lead to Easter and Harvest assemblies and support classroom teaching on Holy Week, Jesus' disciples and forgiveness.





In the summer, we went from three Sunday Clubs a month to two, with an all-age service in the middle of the month to replace it. Claire finally stepped down from Sunday Club so she can help at Community Kitchen, although she still sometimes sits in as an extra adult. Sunday Club is now run by Vickie and Andrew who alternate with each other. The Community Kitchen meal includes a few children and young people; we have an activity table for them and when the weather is good, they kick a ball around.

In August Sam started a fortnightly Christian youth group, 'Pizza & Prayer', joint with St Leonard's Church, Arbourthorne, for secondary-school aged teenagers. Lucy has been helping with this since Britt Webb, the curate of St Leonard's, changed roles. We have four teenagers come currently. We began by talking about wellbeing in the first few sessions before moving onto various Bible passages.

Julie has helped Lucy and Sam lead and develop Baptism preparation and served as verger at baptism services; this autumn, Lisa Wigfield committed to helping too - to build on links with local families for Tots@Temple Park.

In December, we held our Christingle in the morning as an Ark service, which was very well attended. Our sixth Christmas Toddler Disco - organised by Julie - took place at Victoria Methodist Church again with DJ Ruth Mills, hot dogs and drinks, and Santa's grotto.



Community Kitchen

Sarah Short

How St. Swithun's Community Kitchen Builds Community & shares God's love:

Let's be honest - people might show up for the food, but there's a whole lot more cooking at St. Swithun's than just a tasty dinner!

Come for the Grub, Stay for the Love.

We see it every week: someone walks in looking for a hot meal and ends up getting a side order of belonging. You can't help but smile when people who barely spoke a word at first are now swapping stories, laughing, and sometimes even arguing (nicely!) over the last slice of cake.



Some of our regulars have gone from sitting quietly at the back to rolling up their sleeves and helping in the kitchen. One said, "I didn't think I'd be helping set up for meal, but it's better than therapy!"

God's Love - Served Without Preaching

We're not in the business of arm-twisting anyone into church, but something happens when you serve up kindness with your 'Meat & Potato Pie. People start asking, "Why are you lot so nice?" or "What's the catch?"

That's our cue to let them in on the secret ingredient: God's love (no, really, it's not just the gravy). We've had people ask for prayer, pick up a church leaflet, come to breakfast on Sundays and stay for the service to see what all the fuss is about.

Our Prayer tree sits pride of place in the foyer, where people come to sit and reflect and offer up prayers. We also do a thank you prayer before we eat at every meal.





We don't do hard sells, just hard-to-resist puddings and a listening ear. Whether someone wants to talk about faith, share a worry, or just enjoy a second helping, there's space for it all. Sometimes, the best conversations about God happen between mouthfuls of crumble.

Looking Ahead

So what's next? More meals, more laughter, and (if we're lucky) a few more people discovering that church isn't as scary (or as boring) as they thought. We'll keep serving up the good stuff, with a generous dollop of hope!

Last but not least

I would like to do a shout out to everyone: volunteers, guests, and the PCC and Church Fam that make this happen. Together, we're making St. Swithun's Community Kitchen the best-kept secret for food, friendship, and a little taste of God's love.



Manor Church & Community Project

Lisa Wigfield & Revd Debora Marschner

Highlights

The arrival of Revd Lucy Sablan and Revd Sam Tudor in Sheffield Manor Parish has increased the sense of project momentum this year and strengthened our day-to-day partnership between MCCP and Manor Parish.



This year we have introduced a weekly prayer time at Temple Park Centre, giving us a short time to pray for the Project and to reflect on our work through the text we read in the Bible. This is usually led by Lucy or Sam, but Lisa has led on occasion. Claire also attends the warm space to share a 'sand story' which is enjoyed by all.

One of our volunteers brought her family to a service at St Swithun's, and now readily gets involved in both prayer and the 'sand story'.

We held four Crafternoons – a session for primary school-aged children to be creative, hear stories from the Bible and share in a meal, with attendance being ad hoc. We have several regular families who appreciate this time to come together.

Our Summer and Christmas Fairs were well attended by members of our community, and Manor Parish had a stall at both events. Our volunteers, and Manor Parish members were key in making this a good experience for all.



We have enjoyed collaborating with the Community Kitchen at St Swithun's Church, which Lisa Wigfield's trust-building and connections helped to start. It is great to see this so well attended.

In October we saw the start of the new 'Tots at Temple Park' providing a space for parents/grandparents and carers to meet whilst their young children play and learn in a safe and fun environment.



Lisa is now volunteering as a Baptism Assistant with Sheffield Manor Parish, befriending young families and inviting them to the toddler group.

Our partnership working across the community continues to grow with Green Estate and Friends of Manor Fields Park; our partnership with Manor and Castle Development Trust has also significantly grown. We are looking at working together to offer groups and activities for people living with Dementia.

The old church furniture has finally been removed from Temple Park Centre, allowing our user groups to use the building to its fullest.

We have partnered with MASKK, our main tenant, to improve facilities at Temple Park Centre with the addition of a new kitchenette, a bigger and better soft play frame, new front doors and new fire doors meeting updated regulations. We also negotiated a small increase in room rental from MASKK, helping with our tight budgets.



At Christmas we created a knitted and crocheted a community tree with members of Manor Parish, Woodhouse Methodist Church and Temple Park Centre working together. It created interest from community members and people attending our sessions.



Grant Funding

One key piece of work has been applying for and securing funding to continue Lisa's salary for an additional three years (2026-2029)

We have needed to grant fund to replace the rain-damaged ceiling and are still applying for grants to cover costs to repair the flat roofs.

We are grateful of the support from within the Diocese and Methodist Circuit fundraising advisors as we chase funding for salary and building simultaneously.

Looking ahead, the next three years we will be focused on developing more faith-based elements to the project. We've called it 'Branching Out'. In September 2025 Lisa and Claire filmed a short video with the help of Ruth Mills, a member of Manor Parish, to support our funding applications.



Our Priorities for the coming year

- Increasing attendance at Monday Crafts and Warm Space to twelve and twenty respectively
- Continuing to expand the number of volunteers for all MCCP-run groups and activities
- Increasing the frequency of Christian storytelling at MCCP-run groups and activities
- Continuing to invite activity attenders to parish services
- Increase footfall at Temple Park Centre by offering a calendar of family activities including movie nights, quiz nights and markets and fairs.

Haven@Table 2025 Report

Jenny Richardson

Haven@Table is a place for a relaxed chat over a meal in our home on City Road... we share food and stories of what's happened in the last few weeks, we listen, laugh, pray! We have fun and some more serious moments, as we share our stories, poems, relevant words from Bible, favourite music – and much more. We usually end with quiet prayer and reflection, around the table, with candles and the remains of trifle and fruit crumble.

We meet monthly and usually focus on a theme. We're aware of the turmoil and unrest in our own country and in the wider world, and often find ways to connect what we experience day to day with wider concerns.

For example, one evening we looked at pictures of fences, boundaries and frontiers, in our homes, our neighbourhood, our country and thought about which we did or didn't like. On another evening we thought about being together around a table, what it means to be hospitable to each other, and how the Eucharist in church can feel like a place of both inclusion and exclusion. Other themes have included waiting and hoping; having courage; trees and what we notice about them; money and possessions.

As always, Haven@Table has been a place for us all to relax and be ourselves, and find plenty to chat about!

This year, we have met on 9 occasions. This year in particular, our own health issues, caring for those in our wider families, and bereavements have been important in our conversations. Most of the time we have been face to face around the table, twice in the garden to enjoy the good weather, once on Zoom.

It is in its 17th year – and still has a few of those who have been there from the start! The group continues with 11 regulars, plus others from time to time. There's an average of 8 people each month. If you think you'd like to give us a try, please just turn up! See the monthly parish newsletter for details.





Community of St Paulinus & Cathedral Partnership

Sheffield Cathedral is England's first resourcing cathedral in the inclusive-catholic tradition. At its heart is a daily cycle of worship and a commitment to serve the city through education, culture, and partnerships such as the Archer Project (a homelessness charity based in the Cathedral). Each year over 200,000 people enter its doors seeking hope and belonging, embodying its vision to be "a place for all people."

Working closely with the Bishop and Diocese of Sheffield, the Cathedral is pioneering a model of formation where contemplative spirituality and missional innovation flow together. This is an ideal environment for a curate seeking to grow in contemplative life, urban catholic mission and church planting.

Much of this work will be embedded in the Community of St Paulinus (CsP), a new, non-residential mission community rooted in the Cathedral's daily rhythm of prayer and deployed in mission across the city. The CsP brings together ancient monastic wisdom and contemporary mission practice, seeking to rejuvenate the life of partner parishes through prayer, community organising and creative evangelisation in the inclusive-catholic tradition.

The Manor Parish is the first parish partner in this initiative. Our Team Rector is also thoroughly embedded in the project as Residential Canon for Urban Evangelisation, and is keen to develop a partnership of mutual support and learning between our Parish and the Cathedral, in order to resource the wider work in the diocese.

As the Community of St Paulinus Launches, some of the practical ways we hope to see this support realised on the Manor are through

- Continuation of the School's Singing Project at Prince Edward's School and strengthened connections with St Swithun's and the school.
- Support for Manor Lodge School in running their school choir with staffing from the cathedral and support from the Parish
- A new after school 'Choir Church' launching at ST Aidan's
- Recourses and staffing for a music based toddler group.
- Community organising training



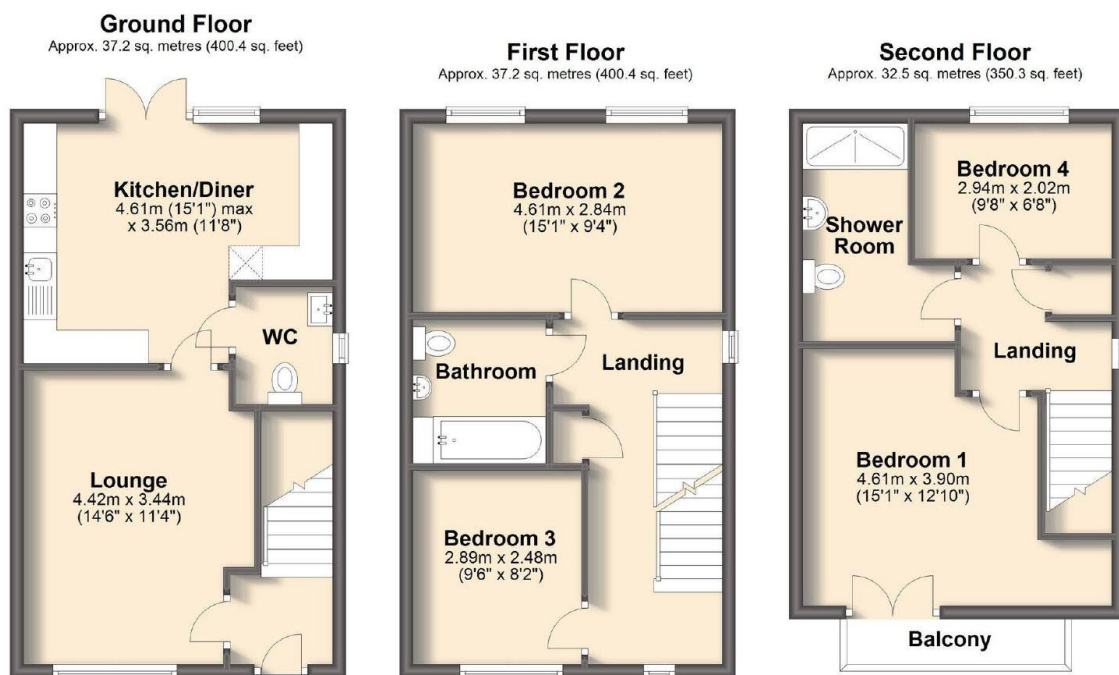
We are excited about the potential of this relationship and excited to see where this extra injection of support can help the church to grow on the Manor, and how we can help the Cathedral to better collaborate with urban communities in the city.

Housing Provision

A house on Park Spring Drive is allocated for the role, although housing allowance may be considered in its place.

The house is a modern build, in the neighbouring parish of Heeley with Arbourthorne and Norfolk Park. It is a 5 minute walk to Park Grange Tram Stop, a roughly 20-minute walk to St Aidan's or 5-minute drive to St Aidan's or St Swithun's Churches.

The house has 4 bedrooms, with one intended for use as a study.





Role Description

Details of Post

| | |
|--------------------|--|
| Role Title: | Associate Priest, Manor Parish |
| Name of Benefices: | Manor Parish |
| Deanery: | Attercliffe |
| Archdeaconry: | Sheffield |
| Reporting to: | Team Rector, Manor Parish |
| Hours: | 3 days a week (0.5 stipend with housing) |

Brief statement from the Bishop of Sheffield

Overview

The Manor Parish is a diverse, eclectic and inclusive parish broadly within the liberal catholic tradition. It has 3 church buildings, St Aidan's, St Swithun's and Temple Park Centre each with their own distinct roles in the community. The parish has ambitious plans to grow new congregations, develop outreach and nurture its civic and social role in the community. It is supported in this through a wonderful church community, PCC and local ecumenical partners, as well as Sheffield Cathedral and the Community of St Paulinus who will be resourcing a number of upcoming projects.

The primary role of the Associate Priest will be to work closely with the Team Rector, clergy and lay colleagues to support the mission and development of the parish with a particular focus on the pastoral care of existing and new church congregations and communities.

Role Purpose

1. To assist the Incumbent in the cure of souls, in collaboration with the Bishop.
2. To support the work of the parish in seeing Christ-like, lively and diverse Christian communities grow which are effective in making disciples and in seeking to transform our society and God's world.
3. To represent the Church of England in the wider community.

Specific Responsibilities

1. Under the supervision of the incumbent, to oversee and shape a new midweek community at St Aidan's Church formed around morning drop ins that support local people and followed by a lunchtime Eucharist.
2. To participate in and support the rhythm of prayer and worship in the parish, including preaching and presiding regularly across the churches.
3. To conduct occasional offices in the parish, alongside other clergy.
4. To have a particular responsibility for building up the funeral ministry in the parish, including building strong relationships with local funeral directors and cemetery and supporting, training and equipping volunteers including vergers and lay readers who support this part of parish life.
5. To identify, together with the Team Rector, an area of civic/community life to have a particular focus on, and to develop a role in said area.
6. To appropriately utilize Prayers of Love and Faith where requested.
7. To be strong and steadfast in faith and in commitment to the people of the Manor.

General Responsibilities

1. To fulfill the responsibilities of clergy as described in the Canons, the Ordinal, the Guidelines for the Professional Conduct for the Clergy and other relevant legislation.
2. To watch over yourself.
3. To ensure that a high standard in presiding and administration of the sacraments, leading in worship, preaching and pastoral care is offered.
4. To develop the ministry of the laity such that all are using their gifts for the common good and to develop a ministry team.
5. To model responding to human need by loving service.
6. To participate in diocesan, national and international initiatives to transform unjust structures of society.
7. To seek at all times to safeguard the integrity of creation and sustain and renew the life of the earth.
8. To encourage Christian stewardship of people's time, money and abilities.
9. To ensure full compliance at all times with the Diocesan Safeguarding Policy.
10. To fulfil the bishops' requirement of full engagement with continuing professional development through Leading Well, Continuing Ministerial Development and diocesan events that aim to inspire and equip lay and ordained leaders.

Key colleagues within the church (local, deanery, diocese and ecumenical)

- The Bishop of Sheffield and the Bishop of Doncaster
- The Archdeacon of Sheffield and Rotherham
- The Diocesan Secretary
- The Area Dean and Lay Chair of the Deanery
- Clergy, staff team and Lay Leaders in Manor Parish
- The PCC of Manor Parish
- Mission Area Colleagues
- Chapter and Deanery Synod
- The Diocese Parish Support Team

Key partners in the wider community (individuals and organisations)

- Ecumenical partners involved in Manor Church and Community Project
- Other community organizations as appropriate
- Manor Lodge School

Review Date:

Signature of Office Holder:

Date:

Signature of Archdeacon:

Date:

Person Specification

| CRITERIA | ESSENTIAL | DESIRABLE |
|---|---|-----------|
| Qualifications and Training | <ul style="list-style-type: none"> • Ordained Priest in the Church of England • Theological training to an appropriate level • Willingness to undertake further training and professional development as required | |
| Theology , Tradition, Spirituality and Prayer Life | <ul style="list-style-type: none"> • Deeply rooted and sustained by the Christian faith and a rich prayer life • Adaptable, grounded in tradition but open to creative contextually appropriate patterns of worship. • An Inclusive theology | |
| Knowledge | <ul style="list-style-type: none"> • Excellent knowledge and understanding of the Bible and ability to communicate it well to different age groups and stages of faith • Good up-to-date understanding of church growth • Good knowledge of Church of England processes and procedures, especially life events | |

| | | |
|-----------------------------|--|--|
| Experience | <ul style="list-style-type: none"> • A range of life experience • Experience in all aspects of parish work • Experience of officiating at life events • Experience of effective methods or approaches to communicating the gospel to people of no, little or different faith and nurturing them into faith. | <ul style="list-style-type: none"> • Experience of a range of style of life events • Experience of working in an area of multiple deprivation/estates context |
| Skills and Abilities | <ul style="list-style-type: none"> • Able to collaborate with other leaders • Proven ability to build links and partnerships beyond the church • Ability to communicate effectively, especially to listen and empathize • Ability to work on his / her own initiative and with good administration and time management skills • Strong administrative skills • Confident and strong interpersonal and communication skills | <ul style="list-style-type: none"> • Evidence of having used innovative methods or approaches to communicating the Gospel • Competent in the use of Information Technology |
| Personal Attributes | <ul style="list-style-type: none"> • Resilience • Ability to implement boundaries appropriately • Ability to collaborate • Teachable • Good sense of humour • Down to earth • Energetic • Honest and a person of integrity • Empathetic and a good listener | <ul style="list-style-type: none"> • A Gatherer of people |