



CORNERSTONE BENEFICE

**Parishes of Bolsterstone & Deepcar and Stocksbridge
(part of the South Pennine Mission Area)**



**THE DIOCESE OF
SHEFFIELD**

Contents

Bishop's Statement.....	3
Cornerstone Benefice.....	2
Parish of Deepcar and Stocksbridge - St. John the Evangelist	4
Parish of Bolsterstone St. Mary	6
Stocksbridge Christian Centre	8
The Rest of the South Pennine Mission Area.....	10
Penistone & Thurlstone Team Ministry	10
United Benefice of Tankersley, Thurgoland & Wortley.....	11
Role Description.....	12
Details of Post	12
Context.....	12
Role Purpose.....	12
Specific Responsibilities	13
Person Specification	15
Benefice House (former Bolsterstone vicarage).....	18
Mission Area Information	19



THE DIOCESE OF SHEFFIELD

Bishop's Statement

Dear friend,

For several reasons, 2025 feels like the start of a new chapter in the life of the Diocese of Sheffield.

First, it is the year in which we launch the refreshed version of our Diocesan Strategy, by which we seek to be 'renewed, released and rejuvenated, by God's grace and in Christ's service. The original seven-year strategy, launched in 2018, has served us well and (despite the very real ravages of the Covid-19 pandemic) there has been much fruitfulness in that time for which to give thanks to God: a new prayer community developed, new ministries begun, new congregations formed. A Diocesan-wide consultation over the refreshing of the strategy gave a clear message: increase the emphasis on seeking the welfare of local communities, of our neighbours and neighbourhoods, but retain the 3Rs and the Diocesan Vision Prayer. This we have sought to do.

Secondly, it is the year in which the Strategic Mission and Ministry Investment Board responded generously to our partnership funding request, committing £17.5 million for investment in the revitalisation of our Diocese with immediate effect and in principle committing a further £18.5 million for the period 2028-2031. We are hugely grateful for this resource and for all the exciting potential it brings, as we continue to seek to see the whole people of God mobilised in the whole mission of God, and every baptised person enabled to enter into the full dignity of their baptismal vocation to shine as a Light for Christ in the world to the glory of God the Father.

Thirdly, it is the year in which we will welcome a new Bishop of Doncaster and a new Archdeacon of Sheffield and Rotherham into post, to bring fresh energy and perspectives to the Bishop's Senior Staff Team.

In this context, the appointment of a new 'Oversight Minister' for The South Pennine Mission Area in the Benefice of Cornerstone and in the Deanery of Tankersley is therefore all the more important. As one of three Oversight Ministers and well-resourced teams of Focal Ministers along with some gifted retired and self-supporting ministers we long to see the church of Christ flourish here – with every person who is baptized confident to shine as a light for Christ in the world to the glory of God the Father.

In this Gospel adventure for the sake of the coming kingdom of God, the leadership of these church families is going to be vital. It will require someone who is able to exercise an enabling oversight, with a passion for teamwork, for developing leaders and for empowering the whole people of God for the whole mission of God. It will require someone able to raise up leaders to take on responsibilities as 'focal leaders' in every congregation

and someone who understands that overseeing the ministry of the body of Christ does not mean doing everything personally, but releasing the gifts and ministries of others.

We are praying that the Lord will bring to us a person with a strong sense of vocation to this task at this time; a person of faith and hope and love in God; a person who laughs easily and has a zest for life in Christ; a person with a sense of adventure, unafraid of failure and reliant on the grace of the Holy Spirit. If that might be you, we would love to explore with you the possibility that the Lord is calling you to this role.

With every blessing

+ Pete Sheffield

The Rt Revd Dr Pete Wilcox
Bishop of Sheffield



Cornerstone Benefice

Our Mission Statement

- to respond to God's calling to serve each other and our community by being faithful in prayer, scripture reading and worship
- to constantly seek God's vision for our own lives and that of the community
- to respond to opportunities to extend God's kingdom

Our Community

- Our Benefice is situated in a beautiful semi-rural area on the edge of the Peak District and comprises three very closely located churches, St John's, St Mary's and Stocksbridge Christian Centre (please see map at the end of this document).
- The Fox Valley retail development has enhanced the area.
- A new town plan is currently being implemented, redeveloping part of the old High Street, Library and other areas, and expanding the housing stock.
- Stocksbridge Community Leisure Centre was adopted by the community following closure by the City Council, and transformed into a valuable community resource, boasting 2 pools, gym, squash courts, bowling, sports hall, café, together with a variety of sport and fitness classes.
- The Benefice is located just a few miles from the M1 and has good links to Sheffield and other local towns and cities.
- There are 2 Infant Schools, 2 Junior Schools, one of which is a church school, 1 Catholic Primary School, and 1 High School.
- There are 2 Medical Centres, 2 Care Homes and a specialised Brain Unit.
- There are Tennis Courts, private gyms, a Rugby Club and Stocksbridge Park Steels Football ground and numerous children's playgrounds.

Our Sunday Worship pattern

- 9.30am: St John's – alternating between Holy Communion and Morning Prayer
- 10.30am: Stocksbridge Christian Centre (a Methodist/Anglican LEP) – Morning Prayer with regular Holy Communion services
- 11am: St Mary's - alternating between Holy Communion and Morning Prayer
- Joint services are held several times a year

Our Team of Service Leaders and Preachers

- The ministry of women and men, lay and ordained is accepted at all levels across the Benefice
- We have an experienced and active team of Anglican and Methodist ordained and lay ministers who serve in all three churches
- The Methodist Minister of Christ Church Stocksbridge, Green Moor Methodist and Crane Moor Methodist churches now also has pastoral oversight of the Christian Centre

Other churches in the Benefice area

- Christ Church, a Methodist URC LEP,
- St. Anne's Roman Catholic Church,
- IKON, part of the Groundlevel Network of Churches,
- The Salvation Army.

Churches Together

- Churches Together in the Valley set up the Bridge Community Shop
- There are joint acts of witness during Holy Week including the lighting of a huge cross overlooking the whole valley on Maundy Thursday, which is left lit as a witness for the next few weeks
- 'Food Matters' is based at the Christian Centre and comprises a community shop, foodbank and advice support. It receives active and generous cross church support and is a lifeline for many people in the community.



View of Ewden Valley from Bolsterstone



Looking across to the Benefice area from Hunshelf Bank

Parish of Deepcar and Stocksbridge - St. John the Evangelist

Our Mission

- to respond to God's calling to serve each other and our community by being faithful in prayer, scripture reading and worship
- to constantly seek God's vision for our own lives and that of the community
- to respond to opportunities to extend God's kingdom

Our Community

- Deepcar and Stocksbridge parishes were combined to form the new Parish of Deepcar & Stocksbridge in 2018
- we minister to the majority of both Stocksbridge and Deepcar, covering private and social housing, industry, retail, commerce, civic, leisure, care homes, and all the of the schools
- our community is thriving and expanding following recent and in progress housing developments

Our Building

- St. John's was built in 1877 and extended in 2000,
- the building has a spacious open light feel and provides us with a flexible space which we can adapt for different styles of worship and other events such as barn dances and meals

Our Worship

- our usual Sunday attendance is 24
- we have a healthy team of approximately 75% of our members who serve on Sundays in various ways, such as welcome, reading, hospitality and the sound and light desk. This includes people of all ages.

Our Activities & Outreach

- we have a free of charge Drop-In café on Tuesday mornings which welcomes people from the community of all ages as well church members. This is currently our major outreach and new people have already come into the church through the cafe
- we are blessed with several families which include some teenagers, who are all active in ministry during and around our Sunday worship
- the Rainbows, Brownies & Guides meet in the church on Thursday nights
- the church is used occasionally for concerts and shows
- we open the church for guided prayer sessions to respond to church and world events

Our Church School

- Deepcar St. John's Junior School is a Voluntary Aided Church School.
- the Oversight Minister is always ex-officio Governor

- the children come into the church several times a year, along with their parents, for church festivals and Yr.6 leavers events

Our Opportunities for Mission

- to develop and extend the outreach of the Drop-In café
- to employ a Family & Children's Centenary Worker when our new Oversight Minister is in place with the £50,000 set aside for this purpose
- to build on our current good relationship with St. John's school and explore further opportunities
- to relaunch and if possible extend our 'Open the Book' work to other schools
- to seek God's vision for developing links and outreach with the whole community



Parish of Bolsterstone St. Mary

Our Vision

St. Mary's is part of Cornerstone Benefice within the South Pennine Mission Area. We are a diverse group of Anglican and Anglican/Methodist churches who have a shared aim of worshipping God and fulfilling his mission in the community.

Our Community

Bolsterstone is a picturesque traditional Yorkshire village on the edge of the Peak District above Stocksbridge & Deepcar with its stunning views and rich history. The Parish stretches downhill towards the rural Ewden Valley and in the opposite direction towards Stocksbridge and Deepcar.

The local area is very well served for shops, restaurants and local businesses, with good links to the motorway networks. The area has a number of housing developments which are

encouraging many new families into the area in addition to the mix of existing social and private housing across all the valley.



The Church has strong connections with the famous Bolsterstone Male Voice Choir (BMVC) and along with Deepcar Brass Band there are concerts and events throughout the year. There is an annual Bolsterstone Festival with stalls in the village square and events and games on the village field, organised in conjunction with local groups and businesses, the event attracts many visitors. At Christmastime we also organise "Carols in the Square" accompanied by the Silver Spectrum Band. The well-established Armistice Day Remembrance Service takes place around the War Memorial in the churchyard and is attended by local dignitaries, BMVC and the Royal British Legion.

Our Building

St Marys is a Grade 2 listed building which was completed in 1879, although it is thought a place of worship has existed in Bolsterstone from the 12th century. The church still retains all its original pews. The entrance to the church is through the lychgate erected to mark the diamond jubilee of Queen Victoria in 1897.

In 1892 a new peal of eight bells was fitted in the west tower made by the bellmakers John Taylor of Loughborough. These have recently been refurbished and retuned by the same company. The bells are popular with bell ringers given their rich sound and ground floor ringing chamber. Peals are often requested by local and national bell ringing teams.

A disabled toilet and small meeting room with a kitchen area was added in the late 1980s.

Our Worship

Worship at St. Mary's is varied but predominantly mainstream Anglican with an alternating pattern of Holy Communion and Morning Prayer at the 11.00am Sunday Service. As a benefice we are lucky to have a number of service leaders who all bring something different to our Sunday worship. The services at Christmas and on Feast Days attract higher attendance. Due to its scenic village location and beautiful interior St Mary's is popular for weddings and for baptisms.

Our Small Groups

St. Mary's holds Advent & Lent courses in church. Our church has been used by local groups to hold meetings and for concerts and is also used for indoor and outdoor missional purposes because of accessibility and beautiful rural location.

Our Activities & Outreach

The church is open daily. We have a weekly Wednesday Coffee Morning which attracts walking groups and locals and has become a great social event. There is a monthly Ladies' Fellowship group with outside speakers. The graveyard is maintained throughout the summer months by a group of volunteers who meet on a fortnightly basis and some also come at other times to keep the beautiful graveyard tidy. We also have strong links with Bolsterstone Archaeological Group who have been mapping the gravestones.

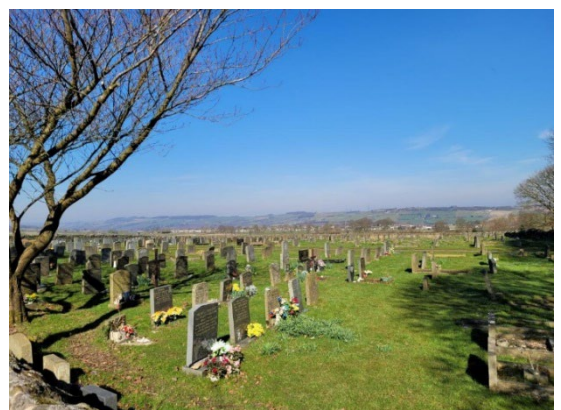


The 4 best things about the church

- Loyal, prayerful and positive congregation and rich heritage
- Popular beautiful location and building
- Being a member of the Benefice with a number of service Leaders and Focal Ministers.
- Expanding and diverse community in the valley

The top 4 challenges for the future

- Ageing congregation, growing the congregation.
- To look for new ways to connect with families, children and local communities to grow a more vibrant church.
- Although we are financially viable, we continue to strive to fund raise, making greater use of the building and its facilities.
- To build our connections with local schools



Stocksbridge Christian Centre

Our Vision

To work ecumenically in our church to embody Christian love and discipleship, serving God, each other, and our community in the light of the Gospel of our Lord Jesus Christ.

Our Community

We are a Local Ecumenical Partnership between the Methodist and Anglican denominations in the Parish of St Mary's Bolsterstone. We are a small, lively, and committed church family of around 20 people. Our Methodist Oversight Minister is the Reverend Ian Lucraft. We adopt the ethos of a seven day a week church, demonstrated by the various groups and activities led daily by members of the church family.

Our Building

This sits in a prime position at the heart of a housing estate with mixed social and private housing. We have four nearby schools, serving children aged 3 to 16. Owned by the Methodist Church, the building has recently undergone exciting physical changes. The sanctuary has been renewed, becoming an adaptable and attractive multi-functional area for both worship and the wider community. Further building work is underway to extend the Food Bank and create a purpose-built children's area.

Our Worship

We benefit from worship led alternately by the Methodist and the Anglican Church. We have three Methodist trained worship leaders and an Anglican Reader. Services range from very traditional to contemporary. We enjoy exploring a variety of mediums, styles and resources in our worship.



Our Groups for Children



Baby and Toddlers



Runway 1: ages 4-7



Runway 2: ages 8- 11





Our Activities & Outreach

We run a Weekly Reflections Group for Bible Study & Prayer, Fortnightly Community Lunch Club, Cornerstone Café on Thursday mornings, and Saturday Coffee Mornings. All served from our new kitchen. We host well attended monthly social events for the community including quiz nights, beetle bingo and pea & pie suppers. Also, regular money-raising Church fairs. **Stocksbridge Infant School** recently joined us for Christingle Services for the first time. It was a very special addition to our calendar, and will continue. Next year we will begin Easter activities for schools and assemblies.



Our Challenges

Although many in our church family are older, we endeavour to rise to our challenges. We are praying for growth and renewal, to be able to maintain our many activities. We would welcome fresh ideas on growing a local church, and to develop ways of working together with St John's and St Mary's in our mission to be God's representatives in our communities. Our greatest challenge is to explore ways to encourage others in the community to share our vision and join us in it.

Our Opportunities for Mission

There are many opportunities for mission within the groups we engage with. We hope to extend our mission to young people by restarting our pre-covid youth work. We share our building with the foodbank and community shop and may provide basic cookery lessons in the future. The Christian Centre is a very exciting place to be with wonderful opportunities for mission, and much already happening. We owe much to the hard work and dedication of Rev. Ian Lucraft and his vision to create a community hub with Jesus at the centre. The harvest is plentiful, but the labourers are few, so we look forward with anticipation to all that God is going to do.



The Rest of the South Pennine Mission Area

Penistone & Thurlstone Team Ministry

Penistone & Thurlstone team ministry comprises of five churches geographically covering 45 square miles. There are two parish churches within the five, namely St John's and St Saviour's; with St Aidan's, St Ann's and St James' being the daughter churches of St John's Penistone.

The following is a quotation from the opening paragraph from our team mission/vision statement:

"We are passionate about making connections between church and community life and for the church to be able to see the whole community as its parish. It is important for people of the wider community to be able to get to know their local church – with its doors open wide, and to feel a sense of belonging. We are committed to go out through the open doors of the church – to share God's love in the world through our words and actions. We recognise the need to build a culture of invitation, welcome and hospitality where all may be touched by the friendships they encounter and come to know the rich blessings of God."



St John's



St Saviour's



St Ann's



St Aidan's



St James'

United Benefice of Tankersley, Thurgoland & Wortley.

This benefice consists of four worship centres;

St Peter's Tankersley, Holy Trinity Thurgoland, St Leonard Wortley and St Paul's Pilley

There are also two Church of England schools in the benefice which enjoy a very close working relationship with their respective parish churches. The incumbent conducts worship assemblies in each school on a fortnightly basis. Holy Trinity and St Peters also host regular school services celebrating the major festivals in the church year.

The three parish churches each have open churchyards to administer. The funeral directors in this area still tend to come to the C of E minister in the first instance to conduct all funerals. Very few funerals are conducted by civil celebrants.

There are currently three Readers and two pastoral Workers. Each parish has also recently appointed a group of Focal Ministers.

The benefice has been recently blessed with Confirmation candidates in 2024. Following discussions and exploration with the Oversight Minister, Tankersley has a Sunday School and the benefice enjoys a very popular Messy Church (currently hosted at Thurgoland) with typically 40+ in attendance.

Each parish has community coffee/Open House type ministries; Thurgoland, in particular has a Community Action Group. St Paul's Pilley is currently having its pews replaced with tables and chairs in preparation for similar hospitality clubs. Each of the parish churches plays a highly significant role in their respective communities, with many members also having "official" roles in the village community itself.

St Peter's and St Leonards are very popular churches for weddings.

New housing developments are ongoing in Tankersley, Pilley and Thurgoland. It is ripe for the harvest.



St Peter's Tankersley



Holy Trinity Thurgoland



St Leonard Wortley



**St Paul's Pilley
(Daughter church to Tankersley)**

Role Description

Details of Post

Role Title:

Priest in Charge of Cornerstone Benefice (Parishes of Bolsterstone St Mary & Deepcar and Stocksbridge St. John the Evangelist. Bolsterstone parish is involved in a LEP with the Methodists at Stocksbridge Christian Centre) and Oversight within the South Pennine Mission Area

Name of Benefices: Cornerstone

Deanery: Tankersley

Archdeaconry: Doncaster

Context

This is a mission area which includes three (3) Benefices (Cornerstone, Penistone and Thurlstone, Tankersley, Thurgoland and Wortley) and involves seven (7) parishes.

In the current Diocesan plan three (3) Oversight Ministers have been allocated to the Mission Area - one to each benefice. One House for Duty minister has also been allocated just to the Cornerstone Benefice.

Cornerstone Benefice covering Stocksbridge, Deepcar and Bolsterstone village has a population of approximately 11,000, although pockets of new housing are being built around the area, and there is a significant development with many new homes being built at Deepcar.

The role of Oversight Minister is to work in partnership with the Bishop, fellow Clergy, Focal Ministers and Lay Leaders, and all the baptised members of the diocese of Sheffield, to help realise the Diocesan strategy to be a flourishing and generous Diocese of Sheffield by 2025: Renewed, Released and Rejuvenated!

We seek to be a Diocese Renewed in the grace and power of God, by a constant reliance on the Holy Spirit. We seek to be a Diocese Released from the constraints which hold us back from mission, and released, as the whole people of God for the whole mission of God. We seek to be a Diocese Rejuvenated — partly through a dedicated and sustained programme of outreach to families, children and young people, and partly through the creation of 75 new congregations, including 25 in our church schools.

Role Purpose

The role of the stipendiary incumbent is defined 'semi-episcopally' as an 'Oversight Minister', to grow healthy local churches by working collaboratively with others in four interrelated ways:

- 1) To oversee mission and ministry in the Mission Area.
- 2) To resource the whole people of God for the whole mission of God.
- 3) To ensure mission and ministry in the Mission Area reflects the Christian faith as understood in the Church of England.
- 4) To identify, nurture and develop leaders of the Mission Area.

The aim of this role description is to clarify expectations and parameters, to ensure that the role holder has the best possible chance to flourish. The specific responsibilities will be reviewed and refreshed regularly as part of the MDR process.

Specific Responsibilities

- 1) To oversee mission and ministry in the Mission Area.
 - To share in the cure of souls across the whole Mission Area, developing strategies for connecting with, serving and witnessing to those who are resident in the area.
 - To provide oversight, guidance and leadership, fostering a culture and practice of collaboration and teamwork and enabling the discernment, development and implementation of vision in the form of a Mission Action Plan.
 - To maintain and build on community relationships with schools, Town Council, other churches etc (especially with Deepcar St. John's CE Junior school - a voluntary aided church school).
 - To be committed to the Local Ecumenical Partnership with Stocksbridge Christian Centre.
- 2) To resource the whole people of God for the whole mission of God.
 - To enable every church member to discern, develop and grow in the exercise of the gifts given them by God;
 - To enable all God's people to grow in their understanding of the mission of God and in confidence in their own calling as full participants in the outworking of that mission;
 - To work with others to ensure a flourishing children and youth ministry within reach of every young person in the Mission Area;
 - To establish functional leadership structures which enable the flourishing of properly collaborative leadership and which give value to the contributions of all those holding responsibility.
 - To oversee worship throughout the Benefice ensuring it is appropriate and creative, with a flexibility to cope with different styles of worship and churchmanship.
 - To oversee and co-ordinate, where appropriate, rotas to ensure the maximum number of people are engaged in the Mission and Ministry of the churches
- 3) To ensure mission and ministry in the Mission Area reflects the Christian faith as understood in the Church of England.
 - To foster a working understanding of Christian faith and practice in the Church of England.
 - To have regard to the calling and responsibilities of the clergy as described in the Canons, the Ordinal, the Guidelines for the Professional Conduct of Clergy, and other relevant legislation and guidance.
 - To be ministers of both word and sacrament.
 - To ensure excellence in safeguarding and care for all God's people, and full compliance with Diocesan and national safeguarding guidelines, policy and procedures.

- To ensure the flourishing of all in their vocation and ministry, irrespective of theological tradition and gender.
 - To oversee the working of effective governance and procedures with regard to the Church Representation Rules and other relevant legislation and guidance.
 - To encourage and facilitate healthy and effective working relationships within and between the congregations, parishes, Mission Area, deanery and diocese.
- 4) To identify, nurture and develop leaders of the Mission Area.
- To take responsibility for the support and development of Focal Ministers and all church leaders, encouraging and actively participating in the diocesan programmes of learning, coaching and reflective practice.
 - To model and promote healthy practices of self-care, attending to self-understanding, rest and recreation, prayer and spirituality

Signed:

.....
Priest in Charge and
Oversight Minister

.....
On behalf of PCC

.....
On behalf of Archdeacon

Date:



Appendix 1.

Person Specification

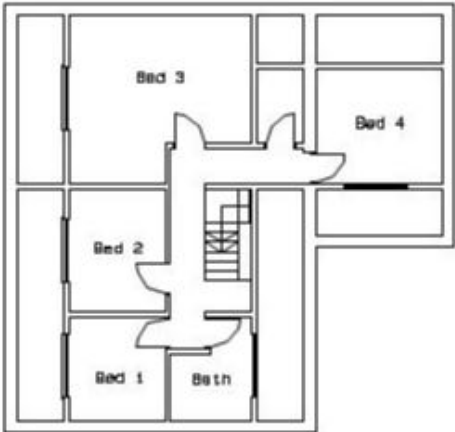
An Ordained Minister

		Essential	Desirable
Qualifications and personal attributes	<ul style="list-style-type: none">Recommended by their Bishop as suitable for Common Tenure Primary Responsibility.	✓	
	<ul style="list-style-type: none">Shows capacity to foster collaboration between lay and ordained ministers (licensed, commissioned and authorised) and lay leaders.	✓	
	<ul style="list-style-type: none">Committed to mutual flourishing envisaged in the Five Guiding Principles.	✓	
	<ul style="list-style-type: none">In Holy Orders for not less than three years.		✓
	<ul style="list-style-type: none">Experienced in leadership.	✓	
	<ul style="list-style-type: none">Able to demonstrate the calling, character, gifts and skills to oversee a number of local churches and ecclesial communities in a range of parishes, institutions and networks.	✓	
Character	<ul style="list-style-type: none">Models leadership on the example of Christ.	✓	
	<ul style="list-style-type: none">Collaborative.	✓	
	<ul style="list-style-type: none">Excited about mission and the diocesan vision and strategy.	✓	
	<ul style="list-style-type: none">Committed to the breadth of tradition in the Church of England and mutual flourishing.	✓	
	<ul style="list-style-type: none">Strong and mature personal faith, nourished by well-established patterns of prayer, worship, reflection and study.	✓	
	<ul style="list-style-type: none">Accountable.	✓	
	<ul style="list-style-type: none">Open to lifelong learning and development.	✓	
	<ul style="list-style-type: none">Recognised as resilient, stable and trustworthy.	✓	
	<ul style="list-style-type: none">Self-aware and self-accepting.	✓	

	<ul style="list-style-type: none"> • Cares for self and for key personal relationships. 	✓	
Experience	<ul style="list-style-type: none"> • Building and facilitating teams, shared decision-making. 	✓	
	<ul style="list-style-type: none"> • Energising and enabling others in forming vision and in strategic planning 	✓	
	<ul style="list-style-type: none"> • Working collaboratively, exercising accountability and delegation. 	✓	
	<ul style="list-style-type: none"> • Encouraging trust in God. 	✓	
	<ul style="list-style-type: none"> • Discerning, nurturing and developing the skills of others. 	✓	
	<ul style="list-style-type: none"> • Helping others shape and engage in mission and evangelism appropriate to the local context. 	✓	
	<ul style="list-style-type: none"> • Knowledge, understanding and experience of diocesan and church structures, policies, and practices including Safeguarding, finance and governance 	✓	
	<ul style="list-style-type: none"> • Taking responsibility for personal well-being and nurture. 	✓	
	<ul style="list-style-type: none"> • Enabling others in their practice of self-care and personal development 	✓	
	<ul style="list-style-type: none"> • Leading, managing and consolidating change. 		✓
	<ul style="list-style-type: none"> • Conflict management. 		✓
	<ul style="list-style-type: none"> • Entrepreneurial skills, including responsible risk-taking. 		✓
	<ul style="list-style-type: none"> • Holding the big picture. 	✓	
	<ul style="list-style-type: none"> • Enabling others in reflection, review and developing the mission and ministry of the church. 	✓	
	<ul style="list-style-type: none"> • Building community through relationships of trust. 	✓	
	<ul style="list-style-type: none"> • Inter-personal skills, including listening, communication, and exercising emotional intelligence. 	✓	
	<ul style="list-style-type: none"> • Organisational skills and administration. 		✓
	<ul style="list-style-type: none"> • Working with different generations and inter-generationally. 		✓
	<ul style="list-style-type: none"> • Pastoral supervision and reflective practice. 		✓
	<ul style="list-style-type: none"> • Coaching and mentoring. 		✓

	<ul style="list-style-type: none"> Working with different theological perspectives, church tradition, culture and life experience. 		✓
	<ul style="list-style-type: none"> Initiating and enabling working relationships between church, Mission Area, deanery and diocese. 	✓	
	<ul style="list-style-type: none"> Handling a complex workload, prioritising and balancing competing demands. 		✓
	<ul style="list-style-type: none"> Making appropriate pastoral provision for leaders. 		✓

Benefice House (former Bolsterstone vicarage)

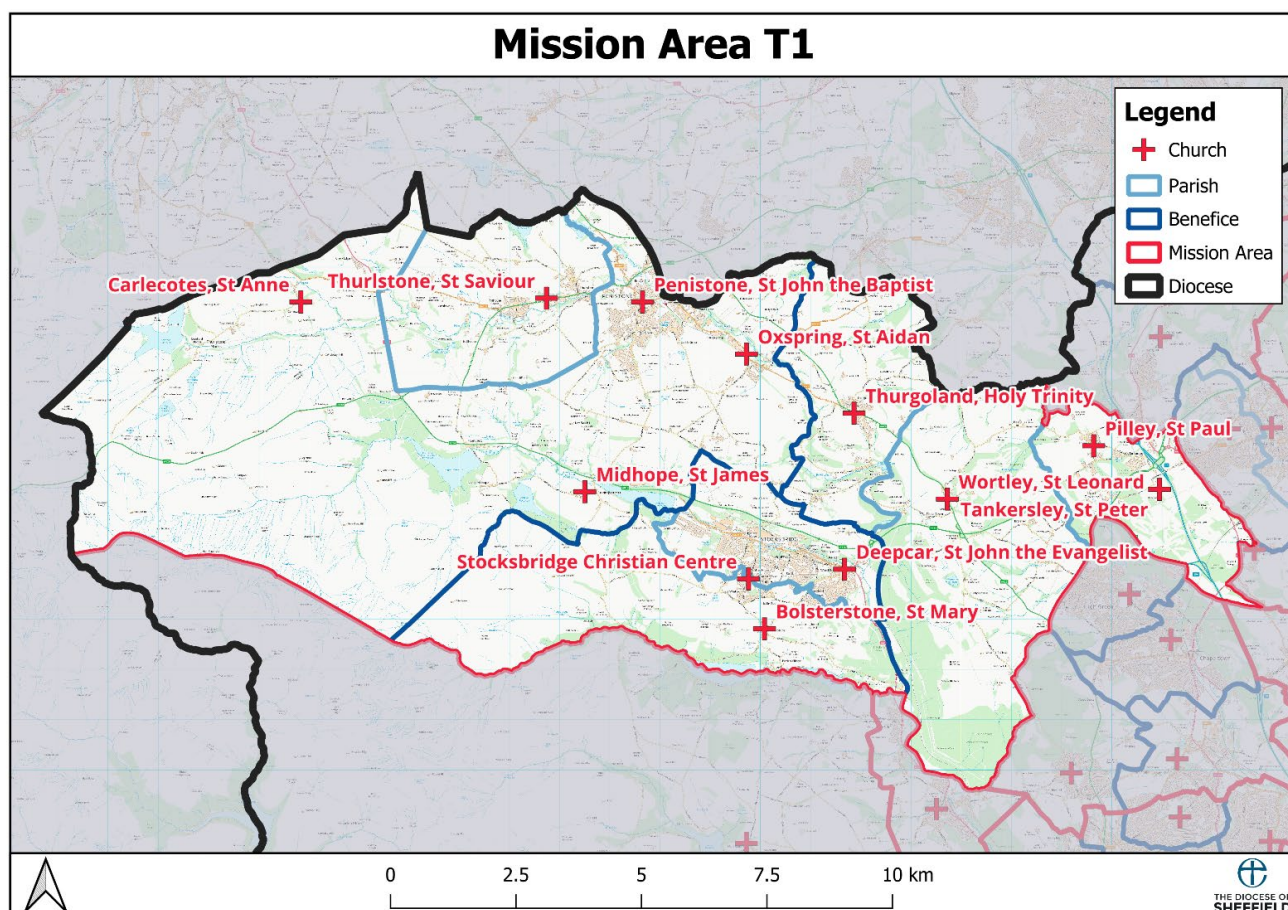


First Floor Plan



Ground Floor Plan

Mission Area Information



Parish Population

Parish Name	Age: 0-4	Age: 5-17	Age: 18-64	Age: 65+	Total Population
Bolsterstone, St Mary	99	278	1,269	633	2,278
Deepcar & Stocksbridge, St John the Evangelist	525	1,363	6,565	2,582	11,034
Penistone	550	1,655	6,378	2,259	10,841
Tankersley, St Peter	125	255	1,245	406	2,031
Thurgoland, Holy Trinity	88	297	1,268	594	2,248
Thurlstone, St Saviour	124	404	1,630	542	2,701
Wortley, St Leonard	16	70	396	165	646
Mission Area Total	1,527	4,322	18,751	7,181	31,779

Source: 2021 Census

Parish Demographics

Parish Name	Ethnicity: % White	Religion: % Christian	Religion: % Other Religion	Religion: % No Religion or Not Stated
Bolsterstone, St Mary	97.8%	52.8%	0.6%	46.4%
Deepcar & Stocksbridge, St John the Evangelist	97.0%	47.6%	0.8%	51.2%
Penistone	98.0%	53.2%	0.7%	45.6%
Tankersley, St Peter	96.3%	54.4%	0.4%	44.7%
Thurgoland, Holy Trinity	97.2%	58.1%	0.1%	41.2%
Thurlstone, St Saviour	98.4%	50.5%	0.4%	48.7%
Wortley, St Leonard	98.9%	62.1%	0.0%	37.3%
Mission Area	97.5%	51.6%	0.6%	47.6%

Source: 2021 Census

Parish Deprivation

Parish Name	National IMD Rank / 12,307 (1 is Most Deprived)	National IMD% Most Deprived	Diocese IMD Rank /171 (1 is Most Deprived)
Bolsterstone, St Mary	2,751	22%	91
Deepcar & Stocksbridge, St John the Evangelist	4,120	33%	105
Penistone	9,525	77%	151
Tankersley, St Peter	5,046	41%	114
Thurgoland, Holy Trinity	9,044	73%	148
Thurlstone, St Saviour	8,587	70%	144
Wortley, St Leonard	6,063	49%	120

Source: Indices of Multiple Deprivation 2019

Parish Statistics for Mission

Parish Name	Usual Sunday Attendance		Average Weekly Attendance		Funerals	Weddings	Baptisms
	Adult	Child	Adult	Child			
Bolsterstone, St Mary	30	2	36	1	32	4	13
Deepcar & Stocksbridge, St John the Evangelist	23	5	19	2	5	0	0
Penistone	89	8	84	22	17	7	12
Tankersley, St Peter	45	2	37	0	6	0	6
Thurgoland, Holy Trinity	35	3	52	15	6	1	6
Thurlstone, St Saviour	15	0	15	0	3	2	3
Wortley, St Leonard	20	1	17	1	5	4	4
Mission Area Total	257	21	260	40	74	18	44

Source: Statistics for Mission 2024.