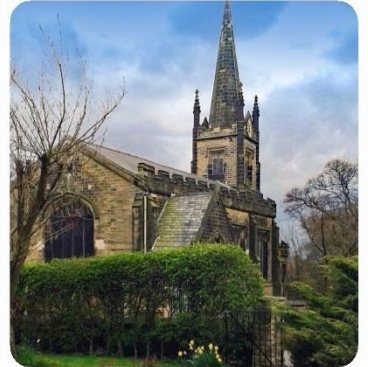


# ST PETERS CHURCH, HOYLAND



THE DIOCESE OF  
**SHEFFIELD**

## PARISH PROFILE



### VISION STATEMENT:

ST PETERS WILL GROW TO BE A CHURCH WHERE ALL PEOPLE CAN USE THEIR TALENTS AND WHERE SPIRITUAL SUPPORT IS OFFERED THROUGH PRAYER AND LOVING SERVICE.



## Introduction

There is no denying it: these are challenging times in the Diocese of Sheffield. And yet, they are also deeply hopeful and exciting times. Few doubt that by 2031 the Church of England in South Yorkshire and the East Riding will look very different from how it does today. What that future will look like is not yet fully clear — but what is clear is our shared desire for renewal, change, the joyful task of sharing with all people the hope we have in Jesus Christ, and for the coming of the kingdom of God.

Our Diocesan vision and strategy is ambitious. We are asking courageous questions about our life and mission together. Will the whole people of God be mobilised for the whole mission of God? What will morale be like among lay and ordained leaders? Will church attendance decline, or will it grow in the way that we are seeing in some of our communities? Will there be more stipendiary incumbents or fewer? More congregations — or fewer? Will we raise up a dynamic and prayerful community of “*Lights for Christ*”?

In 2025, we launched a refreshed version of our Diocesan Strategy, seeking to be *renewed, released and rejuvenated* by God’s grace and in Christ’s service. A diocesan-wide consultation sent a clear message: we must increase our emphasis on seeking the welfare of our local communities — our neighbours and neighbourhoods — while retaining the heart of the 3Rs and the Diocesan Vision Prayer. This refreshed strategy reflects that calling.

The same year also marked significant moments of encouragement and investment. The Strategic Mission and Ministry Investment Board responded generously to our partnership funding request, committing £17.5 million for the revitalisation of the Diocese with immediate effect, and signalling a further £18.5 million in principle for the period 2028–2031. We also welcomed a new Bishop of Doncaster and a new Archdeacon of Sheffield and Rotherham, bringing fresh missional energy to the senior leadership of the Diocese.

With gratitude for all that God has already done, we now look forward with hope and expectation to all that God is calling us to become.

**It is within this context that we are seeking to appoint a House for Duty Priest for the Parish of St Peter's Hoyland within the Lamplight Mission Area.**

This appointment invites the parish, together with the Diocese of Sheffield, to step forward into the Gospel adventure to which God is calling us. We are seeking a minister who can offer enabling and confident oversight: someone with a passion for collaboration, for developing leaders, and for empowering the whole people of God for the whole mission of God. The role will require a person who can raise up leaders to serve as [Focal Ministers](#) in every congregation of the Mission Area, and who understands that oversight of the Body of Christ does not mean doing everything personally, but faithfully releasing the gifts and ministries of others.

We are praying that God will call to us a person with a deep sense of vocation for this task at this time: someone rooted in faith, hope and love; someone who laughs easily and lives with a zest for life in Christ; someone with a spirit of adventure, unafraid of failure and deeply reliant on the grace and guidance of the Holy Spirit. If that might be you, we would love to explore together whether the Lord may be calling you to this role.

With every blessing



**The Rt Revd Dr Pete Wilcox**  
Bishop of Sheffield



**The Rt Revd Leah Vasey-Saunders**  
Bishop of Doncaster

We, God's people, in the parish of St Peter, Hoyland, strengthened by the Holy Spirit, seek to:

- ❖ Worship God in sincerity of heart
- ❖ Teach and nurture people in the Christian faith
- ❖ Respond to the needs of our neighbourhood by loving service
- ❖ Challenge injustice and its causes
- ❖ Be good stewards of God's creation



### **A Single Benefice in the Lamplight Mission Area**

We are part of the Lamplight Mission Area, which is a group of parishes stretching from Wentworth, through Elsecar and Hoyland up to Worsbrough. It was developed to offer mutual support and the sharing of resources between churches. The name Lamplight was chosen to reflect our shared mining heritage but, looking forward, it is a reflection of our desire to be beacons of light in our communities.

Member churches:

Holy Trinity Wentworth and Harley Mission,  
Holy Trinity Elsecar with St Andrews Hoyland, St Peters Hoyland,

St Marys Worsbrough, St Thomas and St James with St Luke's Worsbrough Common.

### **Our Community and Mission**

Although the Church Urban Fund ranks this parish amongst the most deprived in the country there have been some coordinated efforts to develop the town to bring some positive changes. There are new businesses and hospitality venues in town as well as major employers utilising sites off the M1. These all contribute to the increasing prosperity of the community along with some new housing development. Our members are capable, faithful, and well catechised and are keen for opportunities to deepen and share their faith.

### **Our Opportunities for Mission**



In addition to continuing our good work in the schools and local nursing homes we expect to be a primary destination for weddings and even more baptisms in the coming years as new housing is built. With many families settling down here we foresee an increased demand for Occasional Offices and pastoral care. The opportunity before us is to transition into a church better equipped to reach those families who come to us for Occasional Offices so that they might come to a lively faith of their own. We want to continue to be here for people in times of sadness, for funerals and for happier occasions such as weddings, blessings and baptisms.



## Electoral Roll

Year ending 2025, there were 30 names on the roll, of which 10 were resident and 20 non-residents. Home Communion is taken to members of our congregation who can no longer come to church.

## Our Congregation

We are a small all age congregation; we average a congregation of 22 every Sunday.

Taken from Parish Returns 2025	Adults	Children
Average Sunday Attendance	22	2
Average Week in October	32	
Easter	28	
Christmas	38	
Marriages	4	
Baptisms	15	
Funerals	22	



## Children's Ministry

We currently do not have a large number of children that attend regular worship. In 2025 we decided to focus on our welcome to families. It coincided with a new post for the See of Beverley, a Children's and Youth Ministry worker. The remit of this post is to support Society churches in children's work. The work commenced with making a more inviting space for children and for adults. Our focus now is developing the resources for the children which are linked to the seasons of the church and liturgy.

## Primary Schools

We have excellent relationships with three local primary schools who make educational visits throughout the year along with the traditional visits at Easter, Harvest and Christmas.





## Worship and Music

St Peter's Sunday morning Mass is at 10.30am. The worship style is Anglo-Catholic. We are members of The Society under the patronage of Saint Wilfrid and Saint Hilda and are under the Extended Episcopal Oversight of the Bishop of Beverley.

During our vacancy we have been served by visiting clergy (both retired and active) for Sunday Mass and the occasional weekday Mass.

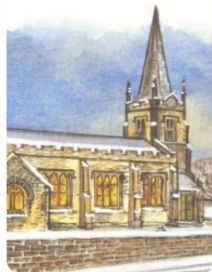
We have a pipe organ which had restoration work in 2019, and there are two organists.

We have the option of 3 different hymn books, The New English Hymnal, Celebration Hymnal and The Complete Anglican Hymns Old and New. Music for Mass is, at present, a mixture of A New Peoples Mass (Gregory Murray) and Mass of Christ the Saviour (Dan Schutte).

There is a team of active lay people, Eucharistic ministers, lesson, intercession readers and Cantor. We also lead worship monthly at a local nursing home.



## Tuesday Social Group



The Tuesday Social is held every two weeks from 10am until 12noon. We serve tea, coffee and toast and marmalade. There is an average attendance of 10 regular visitors with a mixture of none worshippers and church goers. It is good to know that all feel welcome that they can visit for a friendly cuppa and a chat.

As the church is open, there is a welcome to people passing by who see an open door. They are invited to refreshments and also to look around the church, light a candle in memory of a loved one or to spend a quiet time.

In the winter months it is a warm space with a warm welcome for everyone.



## Uniformed Groups

St Peter's host weekly groups

- St Peter's Guides
- St Peter's Brownies
- St Peter's Rainbows

The groups have moved from church to new venues because of the increasing numbers of which the church could no longer accommodate.

- Trefoil Guild

The Guild holds special events meetings in church when there is an open invitation to all. These can be educational or appeals, for example their annual Christmas Shoe Box Appeal.

## Churches Together in Hoyland

This is a group of Ecumenical churches that serve the community in joint open air events giving witness to God at the main times in the church year, Easter, Christmas and in the summer at a large community event, Elsecar By the Sea. This is held in Elsecar park.

The Salvation Army

St Helen Roman Catholic Church

St Peter, Hoyland and Elsecar Holy Trinity Anglican Churches

Faith Aglow



## Civic Duties

St Peter's host the Royal British Legion for the annual Remembrance Sunday service in church at a 9am Mass.

After Mass the Remembrance Parade forms up inside the gates of Hoyland Kirk Balk Cemetery, and departs at 10.50am to march the short distance down to the War Memorial.

We have been fortunate to carry this on with one of the retired Society priests performing the Act of Remembrance which is very important to our community who come in numbers of over 200.

## Connecting with People

- St Peter's WhatsApp group was established during the Pandemic lockdown and continued afterwards. It keeps our parishioners in touch with each other and maintains a connection with church. It also enables those no longer able to be in person at church. We post the Sunday readings and church notices for everyone.
- The St Peter's Church Facebook site (@stpetershoyland) aims to keep our presence in the wider community providing information on services and events. Both were very helpful informing the community that the Sunday service was cancelled when we were snowed in! This is the only service to be cancelled in the two and half years without an incumbent.
- Our website <https://www.stpetershoyland.co.uk>

## Church Building and Grounds



St Peter's is a friendly and welcoming church that is committed to serving God and our community

We have a beautiful and well cared for building which is Grade II listed. The present building was completed in 1831. It was attractively re-ordered in 1991 by the architect Ronald Sims. We are currently developing a building project which will add a new and more accessible entrance.

A group of lay volunteers care lovingly for the fabric of the church which is in good repair. They meet regularly to clean but also to meet in fellowship.

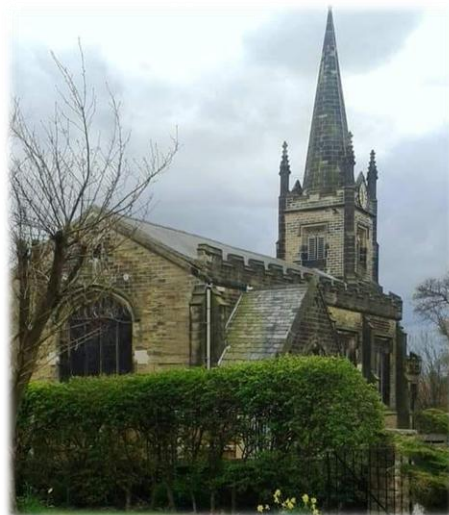
Work is currently taking place to the exterior of the organ loft to address a small area of damp. This includes replacing damaged plastic drain pipes and guttering with original cast iron fixtures and fittings, to return it to its original historical appearance.

We have been successful and so grateful to be awarded grants for the work.

We have the ambition to improve accessibility into church, and facilities within, by creating accessible toilets. We have architects plans and a good amount left from the sale of our parish hall which also paid for the reordering of the church in 1991.

The church tower holds three Ludlam bells (only 12 ever made), hung in new metal framework. This again was achieved with a successful grant application.

Working parties provide work in the church grounds, keeping it neat and safe. While the work is carried out in the grounds church is open for passers-by to call into look around the church or light votive candles.



## Finance

Our church lives "within its means". There is a need to be careful with funds so our finances are carefully managed. We pledge and pay our Common Fund every year.

Regular fund raising events in our local community are well supported.

Our regular, generous givers have decreased over the past few years. We have sadly lost several elderly members of the congregation. Gift Aid is claimed back from HMRC. The claim is done at least once a year and helps the church to pay some of our bills.

## Supporting Others

We continue to support the following with gifts and raised money:

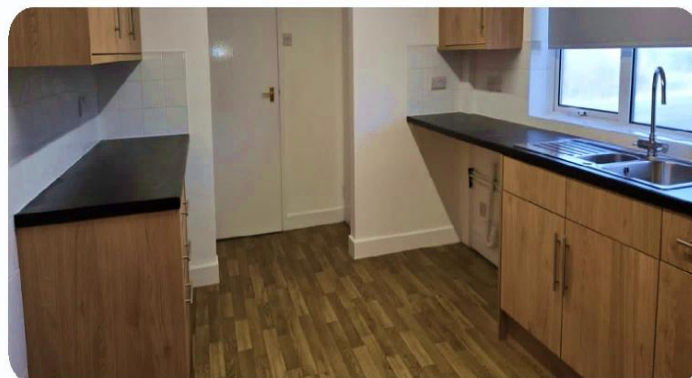
- The Additional Curates Society
- Christian Aid
- Macmillan Cancer Support

Our Local Charities:

- The Food Bank
- Barnsley Women's Refuge
- Barnsley Hospice
- Action for Barnsley Homeless
- Starter Packs

## The Vicarage

The recently refurbished, 4 bedroom vicarage is adjacent to the church. It is a comfortable spacious family home, with a study, a lounge and separate dining room, a detached garage and well-maintained gardens. It is close to the M1 and near the heritage villages of Elsecar and Wentworth, and 15 minutes from the Peak District.



## Vacancy

- We have a hard working and supportive PCC who have ensured that the sacraments have been received every week and the continuation of our mission work during our vacancy. There is active lay participation in services and the Pastoral team ensure the sick visits and home communions are delivered.
- Our prayers were answered by a small number of retired priests who have come each week to celebrate our Sunday Mass and all our Occasional Offices.
- We were extremely grateful to the Bishop of Beverley and Fr Edward Morrison, Dean of the Hickleton Chapter, who offered some evening masses. These have been very well attended.
- Families who have been bereaved, and whose funerals were held in St Peter's church or at our local crematoriums, are invited to the Annual Memorial service. This is always a well-attended service.
- During the vacancy we have had 4 candidates for confirmation. We welcomed The Bishop of Beverley who conducted the services. Refreshments and fellowship made this an enjoyable time for all.
- We have an active fund raising team who arrange events for the coming year. The usual Spring and Christmas Fayres are held in a community hall. The team have become well known for their ability to predict heavy snow fall. We always seem to set dates when we had significant snowfall and we had to cancel events !!

We are a small but constant congregation with a faithful core of parishioners we are praying for a priest to join us and lead us.

## **Role Description**

### **Role:**

St Peter's Church Hoyland - House for Duty (Sunday + 2 days)  
3 year appointment

### **Introduction:**

This role description will be reviewed with the Archdeacon 6 months after the commencement of the appointment, and, if necessary, at Ministerial Development Review, alongside the setting of objectives. This is a House for Duty post with remuneration taking the form of free housing (which is supplied as being essential to the performance of duties and is therefore exempt from taxation as a Benefit in Kind) with no stipend or salary.

### **Role Purpose: Generic**

- To share with the Bishop of Sheffield in the cure of souls of the parish.
- To foster a working understanding of Christian faith and practice in the Church of England.
- To have regard to the calling and responsibilities of the clergy as described in the Canons, the Ordinal, the Guidelines for the Professional Conduct of Clergy, and other relevant legislation and guidance.
- To be ministers of both word and sacrament.
- To ensure excellence in safeguarding and care for all God's people, and full compliance with Diocesan and national safeguarding guidelines, policy and procedures.
- To ensure the flourishing of all in their vocation and ministry, irrespective of theological tradition and gender.
- To oversee the working of effective governance and procedures with regard to the Church Representation Rules and other relevant legislation and guidance.

- To encourage and facilitate healthy and effective working relationships within and between the congregation, parishes, Mission Area, deanery and diocese.
- To take responsibility for the support and development of Focal Ministers and all church leaders, encouraging and actively participating in the diocesan programmes of learning, coaching and reflective practice.
- To model and promote healthy practices of self-care, attending to self-understanding, rest and recreation, prayer and spirituality

### **Role Purpose: Specific**

- To identify, in conversation with the PCC, how your particular gifts and interests can contribute to the life and mission of the parish
- To help ensure pastoral care and worship is offered across the parish on Sundays and through the ministry of Occasional Offices
- To share your insights and knowledge of God in a manner that encourages prayerfulness and a deepening discipleship
- To work collaboratively with colleagues in the Mission Area

### **Ministry Expectations:**

The expectation for time given to the role is the equivalent of 2 days (to be worked as chosen across the week) plus Sunday Worship. It is assumed that at least two days will be protected as days when you will not be available for ministry.

We are looking for someone who:

- as a mature and generous faith, it models commitment to personal discipleship and seeks inspiration from the Bible and the Holy Spirit.
- who will lead us in the Christian faith (sermons, study groups) in an accessible way, encouraging the joy of worship, in sympathy with our tradition.
- will discern with us our vision for the church and offer collaborative leadership.

- can oversee the work of lay workers and volunteers. A good people manager and all member ministries; is committed to nurturing and enabling the gifts of all
- is a good team player with excellent communication skills, verbally and in the written word, with timely communications.
- is approachable, able to provide appropriate challenges.
- lead us in pastoral matters, developing ministry among the congregation and our local nursing homes.
- enjoys being part of community life and relates well to all people within the church and the wider parish.
- will engage positively with local schools. To work with others to ensure a flourishing of children and youth ministry.
- can ensure excellence in safeguarding and care for all God's people, and full compliance with Diocesan and national safeguarding guidelines, policy, and procedures.
- can encourage and facilitate healthy, effective working relationships between the parishes, the Mission Area, the deanery, and the Diocese.
- can model and promote healthy practices of self-care, attending to self-understanding, rest and recreation, prayer and spirituality.

# Person Specification

## An Ordained Minister



THE DIOCESE OF  
**SHEFFIELD**

		Essential	Desirable
<b>Qualifications and personal attributes</b>	<ul style="list-style-type: none"> <li>Recommended by their Bishop as suitable for Common Tenure Primary Responsibility.</li> </ul>	✓	
	<ul style="list-style-type: none"> <li>Shows capacity to foster collaboration between lay and ordained ministers (licensed, commissioned and authorised) and lay leaders.</li> </ul>	✓	
	<ul style="list-style-type: none"> <li>Committed to mutual flourishing envisaged in the Five Guiding Principles.</li> </ul>	✓	
	<ul style="list-style-type: none"> <li>In Holy Orders for not less than three years.</li> </ul>	✓	
	<ul style="list-style-type: none"> <li>Experienced in leadership.</li> </ul>	✓	
<b>Character</b>	<ul style="list-style-type: none"> <li>Models leadership on the example of Christ.</li> </ul>	✓	
	<ul style="list-style-type: none"> <li>Collaborative.</li> </ul>	✓	
	<ul style="list-style-type: none"> <li>Excited about mission and the diocesan vision and strategy.</li> </ul>	✓	
	<ul style="list-style-type: none"> <li>Committed to the breadth of tradition in the Church of England and mutual flourishing.</li> </ul>	✓	
	<ul style="list-style-type: none"> <li>Strong and mature personal faith, nourished by well-established patterns of prayer, worship, reflection and study.</li> </ul>	✓	
	<ul style="list-style-type: none"> <li>Accountable.</li> </ul>	✓	
	<ul style="list-style-type: none"> <li>Open to lifelong learning and development.</li> </ul>	✓	
	<ul style="list-style-type: none"> <li>Recognised as resilient, stable and trustworthy.</li> </ul>	✓	
	<ul style="list-style-type: none"> <li>Self-aware and self-accepting.</li> </ul>	✓	
	<ul style="list-style-type: none"> <li>Cares for self and for key personal relationships.</li> </ul>	✓	

<b>Experience</b>	<ul style="list-style-type: none"> <li>• <i>Building and facilitating teams, shared decision-making.</i></li> </ul>		✓
	<ul style="list-style-type: none"> <li>• <i>Energising and enabling others in forming vision and in strategic planning</i></li> </ul>		✓
	<ul style="list-style-type: none"> <li>• <i>Working collaboratively, exercising accountability and delegation.</i></li> </ul>	✓	
	<ul style="list-style-type: none"> <li>• <i>Encouraging trust in God.</i></li> </ul>	✓	
	<ul style="list-style-type: none"> <li>• <i>Discerning, nurturing and developing the skills of others.</i></li> </ul>	✓	
	<ul style="list-style-type: none"> <li>• <i>Helping others shape and engage in mission and evangelism appropriate to the local context.</i></li> </ul>	✓	
	<ul style="list-style-type: none"> <li>• <i>Knowledge, understanding and experience of diocesan and church structures, policies, and practices including Safeguarding, finance and governance.</i></li> </ul>	✓	
	<ul style="list-style-type: none"> <li>• <i>Taking responsibility for personal well-being and nurture.</i></li> </ul>	✓	
	<ul style="list-style-type: none"> <li>• <i>Enabling others in their practice of self-care and personal development</i></li> </ul>	✓	
	<ul style="list-style-type: none"> <li>• <i>Leading, managing and consolidating change.</i></li> </ul>		✓
	<ul style="list-style-type: none"> <li>• <i>Conflict management.</i></li> </ul>	✓	
	<ul style="list-style-type: none"> <li>• <i>Handling workload, prioritising and balancing competing demands.</i></li> </ul>	✓	
	<ul style="list-style-type: none"> <li>• <i>Enabling others in reflection, review and developing the mission and ministry of the church.</i></li> </ul>	✓	
	<ul style="list-style-type: none"> <li>• <i>Initiating and enabling working relationships between church, Mission Area, deanery and diocese.</i></li> </ul>	✓	
	<ul style="list-style-type: none"> <li>• <i>Building community through relationships of trust.</i></li> </ul>	✓	

	<ul style="list-style-type: none"> <li>• Inter-personal skills, including listening, communication, and exercising emotional intelligence.</li> </ul>	✓	
	<ul style="list-style-type: none"> <li>• Organisational skills and administration.</li> </ul>	✓	
	<ul style="list-style-type: none"> <li>• Working with different generations and inter-generationally.</li> </ul>		✓
	<ul style="list-style-type: none"> <li>• Pastoral supervision and reflective practice.</li> </ul>	✓	
	<ul style="list-style-type: none"> <li>• Coaching and mentoring.</li> </ul>		✓
	<ul style="list-style-type: none"> <li>• Working with different theological perspectives, church tradition, culture and life experience.</li> </ul>	✓	
	<ul style="list-style-type: none"> <li>• Making appropriate pastoral provision for leaders.</li> </ul>	✓	