

TANKERSLEY BENEFICE PROFILE

In the South Pennine Mission Area



St Peter's Church Tankersley



St. Paul's Mission Church Pilley



Holy Trinity Church Thurgoland



St. Leonard's Church Wortley



Content

Bishops' Statement	3
The Opportunity	4
Tankersley Benefice	5
Parish of Tankersley, St. Peter's Church with St. Paul's Mission Church Pilley	6
Parish of Thurgoland, Holy Trinity Church	10
Parish of Wortley, St. Leonard's Church	13
Other Benefice areas of the South Pennine Mission Area:	
Penistone & Thurlstone Team Ministry	16
Cornerstone Benefice	17
Role Description	18
Person Specification	20
Benefice House (former Tankersley Vicarage)	23
Additional Demographics, Maps and Statistics	25



Bishops' Statement for Parish Profiles

Dear friend,

There is no denying it: these are challenging times in the Diocese of Sheffield. But by the same token, these are exciting times for us. No-one has any doubt that in 2029 the Church of England in South Yorkshire and the West Riding will look very different from the way it is now — but equally no one is yet very clear about the shape it will take. Our plan is an ambitious one and we are hungry for change. We are asking tough questions: Will the whole people of God be mobilised for the whole mission of God? What will morale be like, among key lay and ordained leaders? Will attendance figures be in decline or growing? Will there be more stipendiary incumbents or fewer? Will there be more congregations or fewer? Will we raise up a dynamic community of 'Lights for Christ'? Will we grow a praying community of 2025 by 2025? These questions were already pressing ones for us before the pandemic: they will surely be even more urgent for us now.

In this context, the appointment of a new 'Oversight Minister' for The South Pennine Mission Area in the Deanery of Tankersley is therefore all the more important. As one of three Oversight Ministers with well-resourced teams of Focal Ministers along with some gifted retired and self-supporting ministers we long to see the church of Christ flourish here — with every person who is baptized confident to shine as a light for Christ in the world to the glory of God the Father.

In this Gospel adventure for the sake of the coming kingdom of God, the leadership of these church families is going to be vital. It will require someone who is able to exercise an enabling oversight, with a passion for teamwork, for developing leaders and for empowering the whole people of God for the whole mission of God. It will require someone able to raise up leaders to take on responsibilities as 'focal leaders' in every congregation and someone who understands that overseeing the ministry of the body of Christ does not mean doing everything personally, but releasing the gifts and ministries of others.

We are praying that the Lord will bring to us a person with a strong sense of vocation to this task at this time; a person of faith and hope and love in God; a person who laughs easily and has a zest for life in Christ; a person with a sense of adventure, unafraid of failure and reliant on the grace of the Holy Spirit. If that might be you, we would love to explore with you the possibility that the Lord is calling you to this role.

With every blessing

The Rt Revd Dr Pete Wilcox
Bishop of Sheffield

The Rt Revd Sophie Jelley
Bishop of Doncaster

The Opportunity

The Diocese of Sheffield is made up of Church of England organisations located throughout South Yorkshire and the southern parts of the East Riding of Yorkshire. It comprises parishes, schools, chaplaincies, missional communities and other organisations all united by their common Christian faith.

It is an Anglican diocese that is made up of a diverse community of mission-focused people who are seeking to transform their lives, and the lives of others, by sharing the Christian faith. Since the creation of the diocese in 1914, the shape of the villages, towns and cities may have changed but the people are still vibrant, energetic and passionate about serving our Lord Jesus Christ.

In December 2020 the Diocese of Sheffield was awarded a grant of £4.92 million from the Church of England's Strategic Investment Board to support our ambitious transformation strategy over the next 5 years. This will enable us to recruit and deploy a number of parish-facing roles who will support the work of our Oversight and Focal Ministers as they Renew, Release and Rejuvenate the parishes of the Diocese. Included in those roles, alongside our Associate Archdeacon Transition Enablers, will be teams supporting Parish Finance, the care of our buildings and Digital Mission Advisor among other support. There will be enhanced support for the nurture and development of Focal Ministers. As we seek to mobilise the whole people of God for the whole mission of God our Lights for Christ programme will help churches develop their members' discipleship so that every baptised person shines as a Light for Christ in the world to the glory of God the Father.

Our Vision

As a diocese we have been "called to grow a sustainable network of Christ-like, lively and diverse Christian communities in every place which are effective in making disciples and in seeking to transform our society and God's world". Every day around the diocese, dedicated, creative and passionate people are working together in the mission of God, who long to see the Body of Christ grow in depth and in numbers. We long to see every disciple and the whole Church serving our wider society as salt and light.

South Pennine MA Tankersley Benefice

Our Context

Our benefice is situated to the west of the M1 motorway between the major cities of Leeds and Sheffield, lying adjacent to the Peak National Park with a wide range of opportunities including the Trans Pennine Trail. For air travel we are with 1 hour of Manchester International Airport.

Our Mission Statement

We are a welcoming and friendly group of Anglican churches with an aim to worship God and share his good news in our communities.

Our Community

The four churches are in a rural setting, traditionally farming. The landscape was transformed by the Industrial Revolution bringing, Coal Mining and Steel industry into the villages. We have now reverted to rural communities which also serves as dormitories for nearby towns and cities.

We have two Church of England Schools in the benefice which also enjoy a very close working relationship with their respective churches, and appreciate worship assemblies in each school on a fortnightly basis. Holy Trinity and St. Peters also host regular school services celebrating major festivals in the church year. Three parish churches each have open churchyards to administer, plus Commonwealth War Graves.

Our Sunday Worship

Our established pattern of worship is a weekly service at each church. Holy Communion is celebrated at least twice monthly in each location and a united benefice service every fifth Sunday and Messy Church monthly. St. Peter's have a thriving Sunday School every week.

Our Team of Service Leaders and Preachers

Each church has a team of Focal Ministers to help serve and support the local community, churches' worship and mission. The benefice has two lay readers and two pastoral workers.

Occasional Offices

In keeping with our aims to be at the heart of the community, the benefice conducted 10 baptisms, 10 marriages and 18 funerals during 2022/23 which provide good missional opportunities.

PARISH OF ST. PETER'S CHURCH TANKERSLEY WITH ST. PAUL'S CHURCH PILLEY

Our Vision

As members of the South Pennine Mission Area St. Peter's Church and St. Paul's Mission Church has a shared aim of worshipping God and fulfilling his mission in the community, through both parish and benefice worship, sharing our aims and aspirations across the benefice.

Our Community



Over the past ten years the small mining Village of Tankersley has grown from a small close-knit ageing community into a thriving community of both young and ageing families brought about by a number of new housing developments, bringing an active community together. There is a well-used Community Centre "Tankersley Hub" where our church holds a number of our social events. There is also a very pro-active Parish Council in Tankersley who are always keen to support our church events and activities.

St. Peter's Church

St. Peter's Church has never been at the central core of the parish population – no village surrounds it, the only buildings close by being a glebe farm, the former rectory, Church and Stile Cottages, these being pulled down some half century ago. Until the sinking of the Wharnccliffe Silkstone Colliery in 1854, the parish was a scattered community of farms and in the eighteenth century, ironstone workings, and the church very much the "Manor House Church".

The earliest written record of St. Peter's Church can be found in the Domesday Survey of 1086, which refers to a church and a priest there, and although the church dates from the tenth century there are only two pieces of Saxon stonework within the outline of the present building. The oldest



parts of the present church are the pillars of the arcade which separate the North Aisle from the Nave, and the Chancel, both of which are thirteenth century, built in the Decorated English style. The nave dates from the late fifteenth century and linked the original tower with the Chancel. The Clerestory windows are sixteenth century, when the roof was heightened to allow for their insertion.

During the incumbency of Revd. W. Mason Fenn (1864-1886) extensive restoration work took place, as part of his campaign to improve the social and spiritual condition of the colliery workers, and forged a lasting link with the Colliery Company, and the Blake Walker family (managing Partners) played a leading and proactive

role in church life. Further building work was carried out under the personal work of Canon A. Douglas (1918-1942). The most recent structural addition was in 2011, with the addition of toilet and baby changing facilities. This facility has full disabled access.

St. Paul's Church



Revd. W. Mason Fenn built a small Mission Church known as St. Paul's close to the Colliery, in recognition that the centre of the population was there. The church still stands and is an important part of worship in Pilley and Tankersley, and there are plans to carry out significant work on this church to enable the parish to use it as a community space for both worship and social meetings, and supporting the Benefice.

Tankersley Vicarage

Tankersley Vicarage is the property used by the benefice Oversight Minister, and is a large modern stone-built detached family-sized property with far-reaching views across the fields and woodland, in Tankersley Village, within walking distance of Tankersley St. Peter's C of E School.

Our Worship

St. Peter's Church have attendances on average of between 40-50 adults and Sunday School averages 5-10 attendees on Sunday morning for the Holy Communion Service. We have a resident Church Organist and Choirmaster, and are always looking for new recruits. The service at St. Paul's is Sunday Worship with a Monthly Communion Service. The hymns are on-line streaming on to a screen. We use the Mission Praise Hymn Book.

Tankersley St. Peter's Primary School makes regular visits to our church for the special services including Easter, Harvest and Christmas services, and also a school leavers' service before they move on to senior school. There is also an annual presentation of the Fenn Bibles given to two outstanding pupils for religious education.





Activities and Outreach We are unable to open St. Peter's Church on a daily basis due to the rural setting, anyone wanting to visit is able to make prior arrangements with our Church Wardens. The church can be used for prayers when volunteers are around for graveyard maintenance. Our Pastoral Worker is available for home visits including home communion.

Our social committee work hard to have a continuous social calendar throughout the year, with Annual events including Ploughman's Tea and Social evening, games nights, fashion shows, annual Brass Band Christmas



Concerts. A spectacular Christingle event starts with the making of the Christingles followed by an outdoor trail depicting the Christmas story with hand-made models, and a children's quiz as you take the walk through the illuminated woodland glen, arriving back at the Tankersley Hub where there are children's activities, followed by a short service including St. Peters' School Choir. All proceeds are for the Children's Society. Another highlight of our social calendar is the Annual Brass Band Christmas Concert - Carols by Candlelight with an evening of Carols, Readings, Poems, Sketchers and community singing and refreshments.

The graveyard volunteers meet on a weekly basis to carry out grass-cutting and general upkeep of our graveyard. This is also a good meeting for the men to socialise. The grounds are much appreciated by church members and passing visitors out walking the countryside, and there are benches which walkers regularly use for picnic/lunch breaks and just enjoy the surroundings.



After almost 30 years of silence we now have refurbished bells and a group of volunteers who are training under the guidance of the Benefice Bell Captain. This is an exciting project and we are keen to have more volunteers including young members of the church.

Our Challenges

- Our priority is to strengthen our mission across the Parish and encourage people to join us not only in worship but socially.
- As with all churches we are an ageing congregation and are always seeking new volunteers to support the many activities we have and more importantly new activities we have plans to start but need a core number of people to support any new ventures.

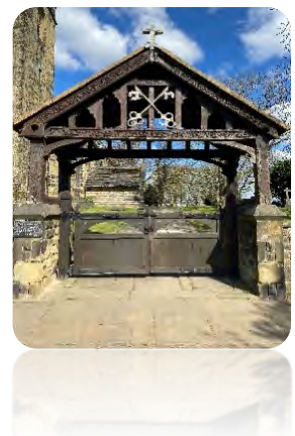
- We are keen to get young members of the church interested in joining the choir. Since covid the choir numbers have depleted with members who are vulnerable or not able to come to church and are having home visits.
- We do need more members for our supportive PCC. Again, we are looking for younger members, who are able to give us a little of their precious free time.



Our Opportunities for Mission



- We have a newly appointed Focal Ministry Team of seven who are attending regular meetings and training events, to carry out work in the Parish.
- Plans have been drawn up to carry out extensive refurbishment work at St. Paul's Mission Church to enable us to share our facilities with other churches in the Benefice and host Messy Church groups.
- To start regular breakfast club, coffee mornings, and lunch groups and recreational activities to support the community especially those who are struggling with loneliness or financial hardship.
- Introducing our church to newcomers into the Parish.



Christingle figures leaving Vicarage



The Christingle Event

PARISH OF HOLY TRINITY THURGOLAND

Our Vision:

We are a friendly, welcoming church, committed to worshipping and serving God, helping people to grow in faith and strengthening relationships with our local community. We are a place of belonging.



Our Community:

Our church serves a village community, traditionally of farmers, miners and steel workers. However, the village has grown substantially during the last 50 years, to become an ever expanding, thriving community with many people commuting to Sheffield, Barnsley and beyond. Thurgoland is clustered around the Church, the Village Welfare Hall and the School. Thurgoland Church of England Primary School has strong links with our church, holding regular assemblies, celebrations and their Nativity here. The Oversight Minister leads regular assemblies in school. We are surrounded by the picturesque countryside of the South Pennines, with easy access to the M1 motorway and the Trans-Pennine Trail, for walking, cycling and horse riding.



Our Building:

Holy Trinity Church has recently been consecrated in 1871 and architect, George Edmund features, including the font from Roche Abbey. We have a and superfast broadband.



celebrated its 150th anniversary. It designed by the leading Victorian Street. It has many attractive carved from stone originally modern audio-visual system

Our Worship:

We worship in church every Sunday through the traditional format of Holy Communion, Morning Worship, Family or Messy Church. We are fortunate to have two experienced Lay Readers, who support the Oversight Minister by regularly leading services.



Our Ministry:

Our ministry extends into our community, across all backgrounds, ages and interests; and aims to be inclusive, with the support of willing volunteers. We have an authorised Pastoral Worker, who helps foster a strong pastoral presence in the community. Recently seven Focal Ministers have been authorised, to facilitate the work of the church within the village. We have a Community Action Group, with the aim of strengthening our relationship with

the local community in a variety of innovative ways; by sharing interests, learning new skills, encouraging good health and wellbeing and combating loneliness.

Our Groups and Activities:

Our groups and activities include the Home Group, the Home Group and the

The Community Action Fun, the Village Walk and



include; the Mothers Union, the Prayer Group, the Worship Group, the Ladies Housekeeping / Churchyard group.

Group activities: Open House, Singing 4 Thurgoland Community Choir.

Seasonal events such as the Spring and Christmas Fayres and Christmas wreath making which are vital fund raising opportunities, the Christingle Service, the Crib Service, and the Lent Group.

We are an active, supportive church who extend the hand of friendship bringing people together, sharing our Christian values and beliefs, offering fellowship and fun, developing spiritual growth and a sense of achievement. We value and show respect for all.

Our Challenges:

- To grow the age diversity of the church community,
- To provide pastoral care to the ageing church community, who are now not as able to join us regularly.
- To maintain and update the 150 year old Victorian building.



Our Opportunities:

- To guide, support and facilitate the work of the Focal Ministry Team.



- To continue to grow Messy Church and develop ministry for young people, by reaching out to families, including many new residents.
- To strengthen the links with Thurgoland Primary School.
- To build a planned toilet extension, to enable a more flexible use of the church building.

- To develop our use of the internet and social media presence; and investigate the desirability of having our own website.



Parish of St Leonard's Wortley

About Us.



For hundreds of years St. Leonard's been a place of worship for the people of Wortley and the surrounding hamlets. The present building has been in place since 1750 but has changed both internally and externally to best serve as a place to love and worship God.

St Leonard's holds regular Sunday Eucharist services with a shorter morning praise once a month and participates in joint benefice services on a rota basis.

Wortley village is a civil parish in the Metropolitan Borough of Barnsley, South Yorkshire, located on the A629 trunk road approximately nine miles from Sheffield city centre and six miles from Barnsley town centre. The small village of Wortley is surrounded by a rural landscape of fields and woodlands and St. Leonards occupies a very visible position.



Wortley is a popular destination for visitors and tourists, many looking to enjoy the many beautiful rural walks and pathways or stay in Wortley Hall or the local B&B's, and as a result we are used to welcoming people from near and far to our church. Our aim is to keep St Leonard's church at the heart of village life for the generations to come.

We are also a popular church for wedding couples, baptisms, and funerals; we make every effort to make the couples and families feel welcome and at home in our church.

Our Worship

We take pleasure in holding services in tune with our rural heritage and surroundings and for the community of Wortley district, maintaining Plough Sunday, Harvest Festival Services and Remembrance Service.

Most services are at 11am but on the second Sunday each month we have an evening service at 6.30pm. We enjoy singing traditional hymns but are always willing to give modern worship songs our 'best shot', managing to smile if we get them wrong at the first few attempts. Whilst not losing sight of solemnity and depth of Christian worship, we take comfort from and enjoy our time together at church.

We embrace and participate in Alpha and Lent courses and are 'hands on' in the benefice provision of Messy Church. We have been actively involved since the very beginning over 5 years ago

Church Community Activities



We have a great bell ringing team who are very supportive. They're very active in helping with the social and maintenance side of St Leonard's and ring for Sunday services, special services, weddings, and often other occasions when requested. The team are all members of the Yorkshire Association of Change Ringers and hold their weekly practice session every Thursday evening. Visiting teams are welcomed from other churches from around the country to ring peals and take part in the joyful sound of the art of bell ringing.



We have two community groups: 'Len's Friends', and our Tea and Chat group. Both meet every Wednesday. The Tea and Chat group is in partnership with Age UK; it is a get together for older people living in the village and surrounding area, who love to have a chat with old and new friends.

Len's Friends are a voluntary group, who carry out a wide range of social, gardening and maintenance activities whilst having fun. The friends' work has also allowed us to register an online Burial Ground Maintenance System as a tool for those wanting to access information for genealogy and heritage purposes and to give us an accurate map and record of our burials. They've researched many interesting historical associations with the church and arranged numerous social and fund-raising events.



For several years for two weeks in March, we have hosted an Art Festival in partnership with Penistone Art Week, with the children from Thurgoland C of E Primary School, ending with a prize giving evening for children and parents, very much enjoyed by all.

St Leonard's takes part in Heritage Open days each year. This is an opportunity for the community and visitors to come and explore the history of our church and to have a chat and a cup of tea.

We also include Tower Open Days where our Tower Captain and Bell ringers are available to accompany visitors who are brave enough to climb the ladder to see the bells, tower clock and to learn more about the history of our eight change ringing bells.

Our Christmas 9 Lessons and Carols Service is a highlight, accompanied by the Thurlstone Brass Band, and is always a full house. Due to the size of our Nave, which has excellent acoustics, we have hosted a range of choirs, musical and historical interesting events.

December leading up to Christmas is very busy with an event on every week and one of the highlights is Bolsterstone Male Voice Choir with Thurgoland C of E Primary School children's choir.

St Leonard's is equipped with a modern projector and screen, perfect for worship or community activities. Wi-Fi equipped, it has a high-quality website and Facebook page to improve our visibility in the on-line age.



Reaching Out

When our village school closed about 30 years ago, we lost part of the 'heart' of the village. Recognising this loss of community amenity, a consultation in 2017 and 2022 provided evidence that there is a need for an inter-generational community space in the village. Our church is reinstating a centre to the community; to offer a building which can be used by different groups within the community and re-inventing that which was lost through the loss of previous village buildings. Plans have been drawn up by the church architect to re-order the west end of the church to include a new floor, wheelchair access, a kitchen area, improvements to lighting and storage.

All this will ensure that St. Leonard's continues to make new friends and remain open to all as a place of welcome and worship.



Wortley Food Bank Support



Penistone & Thurlstone team ministry comprises five churches geographically covering 45 square miles. There are two parish churches within the five, namely St John's and St Saviour's; with St Aidan's, St Ann's and St James' being the daughter churches of St John's Penistone.

The following is a quotation from the opening paragraph from our team mission/vision statement:

"We are passionate about making connections between church and community life and for the church to be able to see the whole community as its parish. It is important for people of the wider community to be able to get to know their local church – with its doors open wide, and to feel a sense of belonging. We are committed to go out through the open doors of the church – to share God's love in the world through our words and actions. We recognise the need to build a culture of invitation, welcome and hospitality where all may be touched by the friendships they encounter and come to know the rich blessings of God."



St John's



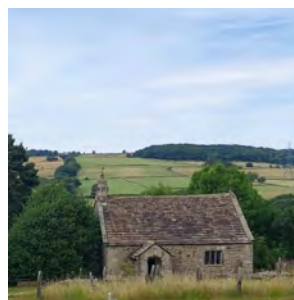
St Saviour's



St Ann's



St Aidan's



St James'

www.penistonedistrictcofe.org



CORNERSTONE BENEFICE

Parishes of Bolsterstone & Deepcar and Stocksbridge

Cornerstone is a diverse group of Anglican churches with a shared aim to worship God and fulfil his mission in the community.

We serve the whole 'Valley' of Stocksbridge, Deepcar & Bolstersone, a tight-knit community with a population of 13,381 from our two and a half churches - St. John's Deepcar, St. Mary's Bolsterstone, and Stocksbridge Christian Centre, an LEP with the Methodists, where exciting new developments are underway, to increase our service to the local community on Whitwell estate, one of the most deprived areas of our benefice.

St. John's and St. Mary's are each blessed with a three strong team of Focal Ministers who meet, eat, and work together across the benefice. Together with our Readers and clergy team of Oversight Minister, part-time house for duty priest, SSM, and retired priest they are looking to further the mission and ministry of our churches in very practical and tangible ways.

We have money set aside to appoint a Centenary Project Families and Children's Worker once our new Oversight Minister is in place and are looking to renew our work in and with the local schools.

Situated on the edge of the moors and the Peak District National Park, Stocksbridge is a community well on the way to recovering from the closure of most of the steel works, with a new Retail Park, new housing developments, thriving community run Leisure Centre, and government investment to revitalise the old main road. As a benefice, we are seeking to be part of the spiritual revitalisation of our patch.



Role Description

Role Title: Oversight Minister for the Mission Area of: South Pennine

Name of Benefices: Tankersley, Thurgoland and Wortley

Deanery: Tankersley

Archdeaconry: Doncaster

Context

This is a mission area of 7 Parishes and 12 worship centres with 3 Oversight Ministers.

The role of Oversight Minister is to work in partnership with the Bishop, fellow Clergy, focal ministers and Lay Leaders, and all the baptised members of the diocese of Sheffield, to help realise the Diocesan strategy to be a flourishing and generous Diocese of Sheffield by 2025: Renewed, Released and Rejuvenated!

We seek to be a Diocese Renewed in the grace and power of God, by a constant reliance on the Holy Spirit. We seek to be a Diocese Released from the constraints which hold us back from mission, and released, as the whole people of God for the whole mission of God. We seek to be a Diocese Rejuvenated — partly through a dedicated and sustained programme of outreach to families, children and young people, and partly through the creation of 75 new congregations, including 25 in our church schools.

Role Purpose

The role of the stipendiary incumbent is defined 'semi-episcopally' as an 'Oversight Minister', to grow healthy local churches by working collaboratively with others in four interrelated ways:

- 1) To oversee mission and ministry in the Mission Area.
- 2) To resource the whole people of God for the whole mission of God.
- 3) To ensure mission and ministry in the Mission Area reflects the Christian faith as understood in the Church of England.
- 4) To identify, nurture and develop leaders of the Mission Area.

The aim of this role description is to clarify expectations and parameters, to ensure that the role holder has the best possible chance to flourish. The specific responsibilities will be reviewed and refreshed regularly as part of the MDR process

Specific Responsibilities

- 1) To oversee mission and ministry in the Mission Area.
 - To share in the cure of souls across the whole Mission Area, developing strategies for connecting with, serving and witnessing to those who are resident in the area.
 - To provide oversight, guidance and leadership, fostering a culture and practice of collaboration and teamwork and enabling the discernment, development and implementation of vision in the form of a Mission Action Plan.
- 2) To resource the whole people of God for the whole mission of God.
 - To enable every church member to discern, develop and grow in the exercise of the gifts given them by God;
 - To enable all God's people to grow in their understanding of the mission of God and in confidence in their own calling as full participants in the outworking of that mission;
 - To establish functional leadership structures which enable the flourishing of properly collaborative leadership and which give value to the contributions of all those holding responsibility.
- 3) To ensure mission and ministry in the Mission Area reflects the Christian faith as understood in the Church of England.
 - To foster a working understanding of Christian faith and practice in the Church of England.
 - To have regard to the calling and responsibilities of the clergy as described in the Canons, the Ordinal, the Guidelines for the Professional Conduct of Clergy, and other relevant legislation and guidance.
 - To be ministers of both word and sacrament.
 - To ensure excellence in safeguarding and care for all God's people, and full compliance with Diocesan and national safeguarding guidelines, policy and procedures.
 - To oversee the working of effective governance and procedures with regard to the Church Representation Rules and other relevant legislation and guidance.
 - To encourage and facilitate healthy and effective working relationships within and between the congregations, parishes, Mission Area, deanery and diocese.
- 4) To identify, nurture and develop leaders of the Mission Area.
 - To take responsibility for the support and development of Focal Ministers and all church leaders, encouraging and actively participating in the diocesan programmes of learning, coaching and reflective practice.
 - To model and promote healthy practices of self-care, attending to self-understanding, rest and recreation, prayer and spirituality

Signed:

Print name: Priest in Charge and Oversight Minister On behalf of PCC On behalf of Archdeacon

Date:

Appendix 1.

Person Specification–

An Ordained Minister

		essential	desirable
Qualifications and personal attributes	<ul style="list-style-type: none"> Recommended by their Bishop as suitable for Common Tenure Primary Responsibility. 	Y	
	<ul style="list-style-type: none"> Shows capacity to foster collaboration between lay and ordained ministers (licensed, commissioned and authorised) and lay leaders. 	Y	
	<ul style="list-style-type: none"> Committed to mutual flourishing envisaged in the Five Guiding Principles. 	Y	
	<ul style="list-style-type: none"> In Holy Orders for not less than three years. 	Y	
	<ul style="list-style-type: none"> Experienced in leadership. 		Y
	<ul style="list-style-type: none"> Able to demonstrate the calling, character, gifts and skills to oversee a number of local churches and ecclesial communities in a range of parishes, institutions and networks. 		Y
Character	<ul style="list-style-type: none"> Models leadership on the example of Christ. 	Y	
	<ul style="list-style-type: none"> Collaborative. 	Y	
	<ul style="list-style-type: none"> Excited about mission and the diocesan vision and strategy. 	Y	
	<ul style="list-style-type: none"> Committed to the breadth of tradition in the Church of England and mutual flourishing. 	Y	
	<ul style="list-style-type: none"> Strong and mature personal faith, nourished by well-established patterns of prayer, worship, reflection and study. 	Y	
	<ul style="list-style-type: none"> Accountable. 	Y	
	<ul style="list-style-type: none"> Open to lifelong learning and development. 	Y	

	<ul style="list-style-type: none"> • <i>Recognised as resilient, stable and trustworthy.</i> 	Y	
	<ul style="list-style-type: none"> • <i>Self-aware and self-accepting.</i> 	Y	
	<ul style="list-style-type: none"> • <i>Cares for self and for key personal relationships.</i> 	Y	
Experience	<ul style="list-style-type: none"> • <i>Building and facilitating teams, shared decision-making.</i> 	Y	
	<ul style="list-style-type: none"> • <i>Energising and enabling others in forming vision and in strategic planning</i> 	Y	
	<ul style="list-style-type: none"> • <i>Working collaboratively, exercising accountability and delegation.</i> 	Y	
	<ul style="list-style-type: none"> • <i>Encouraging trust in God.</i> 	Y	
	<ul style="list-style-type: none"> • <i>Discerning, nurturing and developing the skills of others.</i> 	Y	
	<ul style="list-style-type: none"> • <i>Helping others shape and engage in mission and evangelism appropriate to the local context.</i> 	Y	
	<ul style="list-style-type: none"> • <i>Knowledge, understanding and experience of diocesan and church structures, policies, and practices including Safeguarding, finance and governance</i> 	Y	
	<ul style="list-style-type: none"> • <i>Taking responsibility for personal well-being and nurture.</i> 	Y	
	<ul style="list-style-type: none"> • <i>Enabling others in their practice of self-care and personal development</i> 	Y	
	<ul style="list-style-type: none"> • <i>Leading, managing and consolidating change.</i> 		y
	<ul style="list-style-type: none"> • <i>Conflict management.</i> 		y
	<ul style="list-style-type: none"> • <i>Entrepreneurial skills, including responsible risk-taking.</i> 		y
	<ul style="list-style-type: none"> • <i>Holding the big picture.</i> 		y
	<ul style="list-style-type: none"> • <i>Enabling others in reflection, review and developing the mission and ministry of the church.</i> 		y
	<ul style="list-style-type: none"> • <i>Building community through relationships of trust.</i> 		y

	<ul style="list-style-type: none"> • Inter-personal skills, including listening, communication, and exercising emotional intelligence. 	Y	
	<ul style="list-style-type: none"> • Organisational skills and administration. 		y
	<ul style="list-style-type: none"> • Working with different generations and inter-generationally. 	Y	
	<ul style="list-style-type: none"> • Pastoral supervision and reflective practice. 		y
	<ul style="list-style-type: none"> • Coaching and mentoring. 		y
	<ul style="list-style-type: none"> • Working with different theological perspectives, church tradition, culture and life experience. 		y
	<ul style="list-style-type: none"> • Initiating and enabling working relationships between church, Mission Area, deanery and diocese. 		y
	<ul style="list-style-type: none"> • Handling a complex workload, prioritising and balancing competing demands. 		y
	<ul style="list-style-type: none"> • Making appropriate pastoral provision for leaders. 		y

**BENEFICE HOUSE
(FORMERLEY TANKERSLEY VICARAGE)**



The villages of Tankersley and Pilley are presently a semi-rural setting located to the west of junction 36 of the M1. Until its closure in the 1960's the Wharnccliffe Silkstone Colliery was the primary industry providing employment for residents. The area has since been subjected to extensive redevelopment creating several new residential hamlets and areas of landscaped open space adjoining the neighbouring countryside providing access to attractive walks in this rural setting.

The area is now regarded as an attractive place to live.

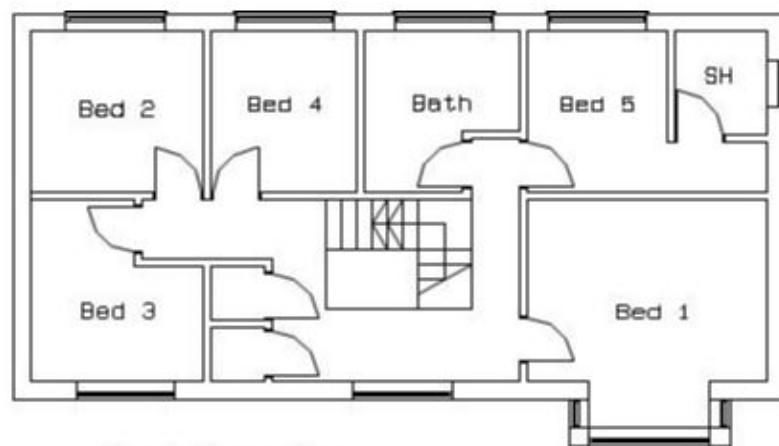
Proximity to the M1 and other major road networks provide excellent communication links to neighbouring cities such as Sheffield, Leeds and beyond. Limited public transport is provided by local companies. Access to the nearest rail network is via the Elsecar station approximately 3 miles away.

The area falls within the remit of Barnsley Metropolitan Borough

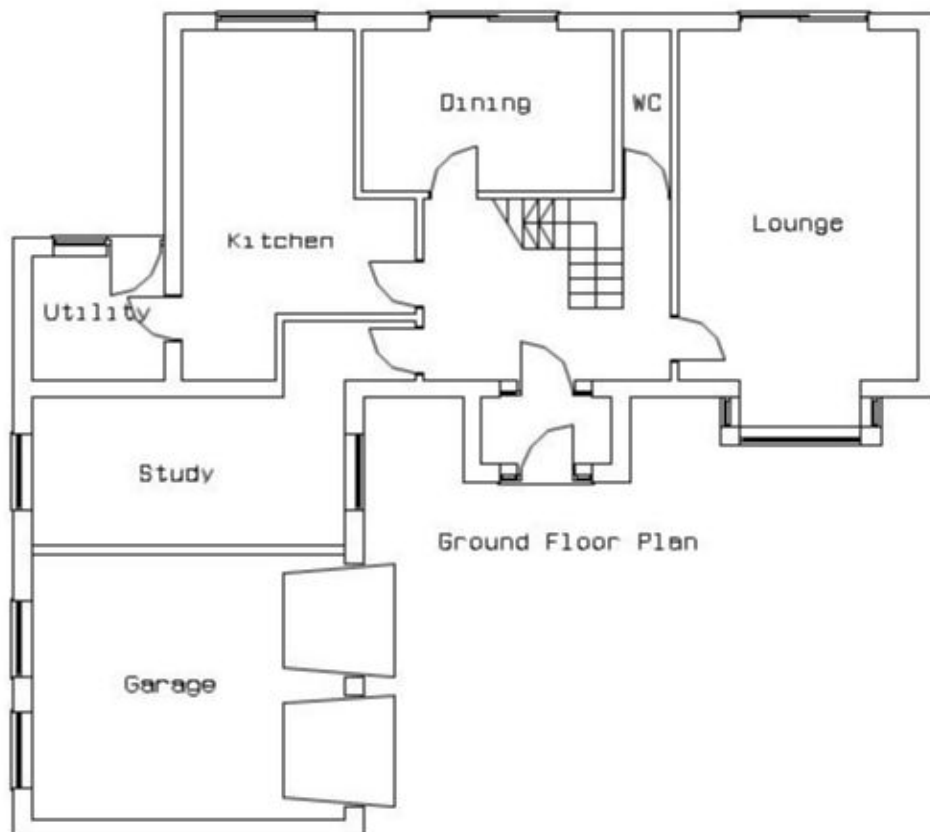


Council but is also served by a local Parish Council. The villages have limited facilities but can boast an active Community Association with premises and resources, St. Peter's C of E School, TPEG local environmental group, a general store and post office, and 2 public parks. Pilley is also served by a Methodist Church.

BENEFICE HOUSE FLOOR PLAN

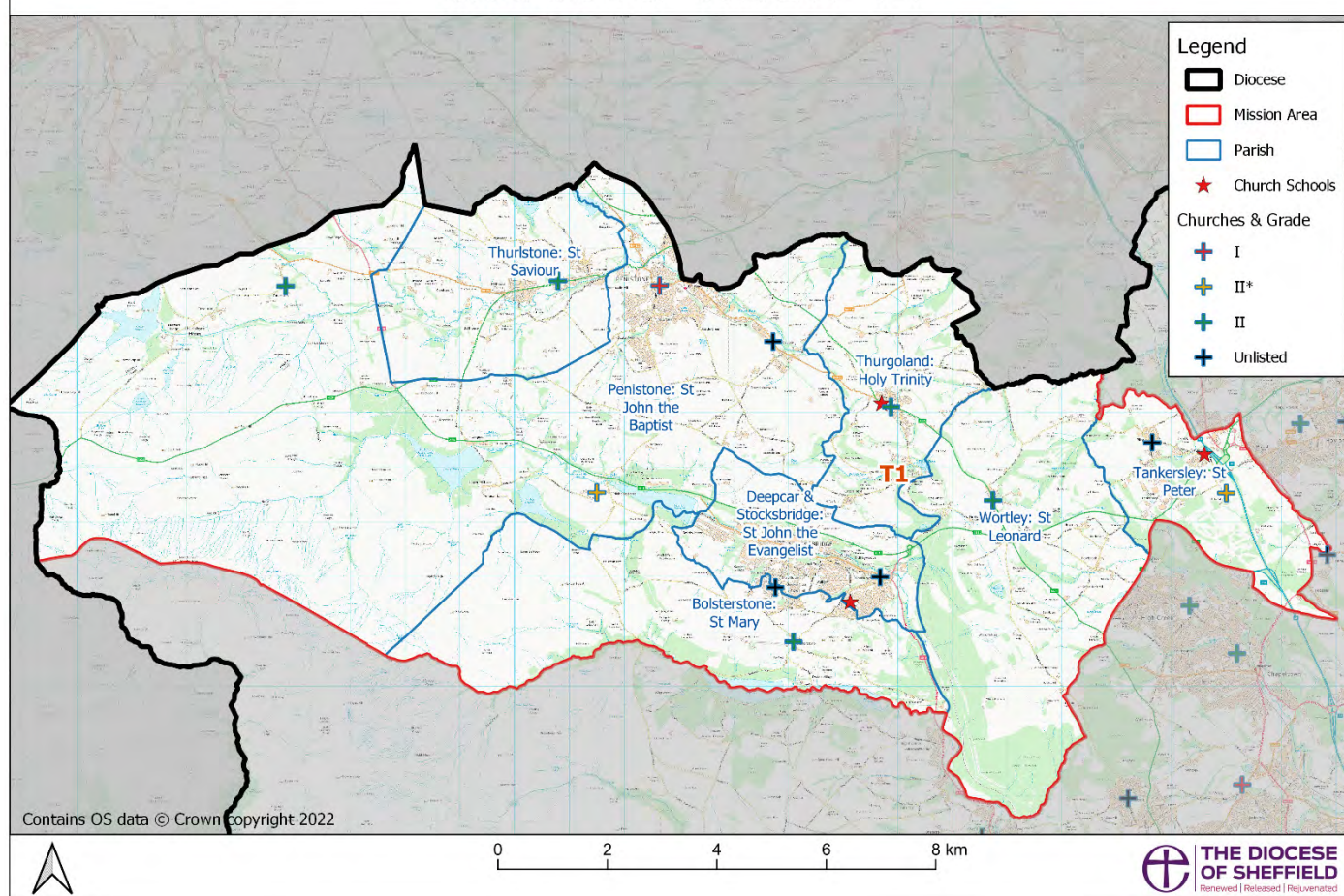


First Floor Plan



Ground Floor Plan

MISSION AREA T1



Parish Population

Parish Name	Age 0-4	Age 5-17	Age 18-64	Age 65+	Total Population
Bolsterstone, St Mary	101	312	1391	580	2395
Deepcar & Stocksbridge, St John the Evangelist	649	1683	6692	2078	10986
Penistone	556	1526	6163	1547	10877
Tankersley, St Peter	97	263	1092	311	1910
Thurgoland, Holy Trinity	101	339	1323	464	2265
Thurlstone, St Saviour	164	367	1568	460	2807
Wortley, St Leonard	26	64	365	119	641
Mission Area Total	1694	4554	18594	5559	31881

Source: 2011 Census.

Parish Demographics

Parish Name	Ethnicity : % White	Religion: % Christian	Religion: % Other Religion	Religion: % No Religion or Not Stated
Bolsterstone, St Mary	98.3%	70.0%	0.8%	29.1%
Deepcar & Stocksbridge, St John the Evangelist	98.2%	64.9%	1.0%	34.1%
Penistone	98.6%	67.6%	1.0%	31.4%
Tankersley, St Peter	98.4%	71.6%	0.7%	27.6%
Thurgoland, Holy Trinity	98.4%	68.2%	0.8%	31.1%
Thurlstone, St Saviour	97.6%	64.9%	1.2%	33.9%
Wortley, St Leonard	97.9%	69.7%	0.5%	29.9%
Mission Area	98.3%	66.9%	1.0%	32.1%

Source: 2011 Census.

Parish Deprivation

Parish Name	National IMD Rank / 12,307 (1 is Most Deprived)	National IMD % Most Deprived	Diocese IMD Rank /173 (1 is Most Deprived)
Bolsterstone, St Mary	2677	22%	96
Deepcar & Stocksbridge, St John the Evangelist	4259	35%	111
Penistone	9264	75%	157
Tankersley, St Peter	5077	41%	120
Thurgoland, Holy Trinity	9110	74%	154
Thurlstone, St Saviour	8572	70%	150
Wortley, St Leonard	6088	49%	126

Source: Indices of Multiple Deprivation 2019.

Parish Statistics for Mission

Parish Name	Usual Sunday Attendance		Worshipping Community		Funerals	Weddings	Baptisms
	Adult	Child	Adult	Children			
Bolsterstone, St Mary	35	2	63	2	10	5	16
Deepcar & Stocksbridge, St John the Evangelist	22	2	31	5	12	2	1
Penistone	92	7	106	8	35	11	20
Tankersley, St Peter	58	8	65	23	8	4	7
Thurgoland, Holy Trinity	30	2	56	26	7	0	5
Thurlstone, St Saviour	18	0	29	7	2	2	7
Wortley, St Leonard	25	3	28	2	4	3	4
Mission Area Total	280	24	378	73	78	27	60

Source: Statistics for Mission 2022